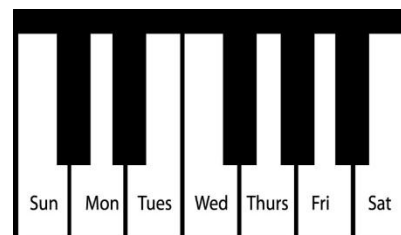
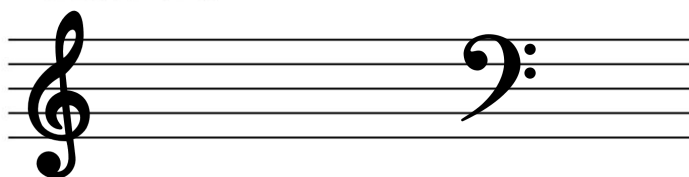







Moonbeams 1

Lesson # 16



Tin sheet at home:



| | | Sun | Mon | Tues | Wed | Thurs | Fri | Sat |
|---|--|-----|-----|------|-----|-------|-----|-----|
| Keyboard  | K-49 with chords | | | | | | | |
| | K-48 with chords | | | | | | | |
| | K-50 tied notes = only play once! | | | | | | | |
| | K-52 RH goes over top of the LH to play the Low C | | | | | | | |
| | | | | | | | | |
| | W-21 Chord Triathlon every day! | | | | | | | |
| | Chord Progression Chart: <i>C scale with all three chords</i> <i>Do this EVERYDAY!</i> | | | | | | | |
| | Clothespin Squeeze | | | | | | | |
| Homework  | H-29 | | | | | | | |
| | H-30 | | | | | | | |
| | Composing: write a sentence and add rhythms, then choose notes to go with your rhythms. Use WB-86/87 to write down your ideas. | | | | | | | |
| Singing  | Tie – a curved line (like a slur or phrase) between two of the same letters. This makes you combine the value of two notes, you only play one note! | | | | | | | |
| | | | | | | | | |
| | | | | | | | | |
| Listening  | L-17 | | | | | | | |
| | | | | | | | | |
| Rhythm Ensemble  | Rhythm Stories | | | | | | | |
| | 2/4 time | | | | | | | |
| | E-11 E-12 | | | | | | | |

Note(s) from teacher: Happy practice month! Practice 5 happy times for a bubble gum