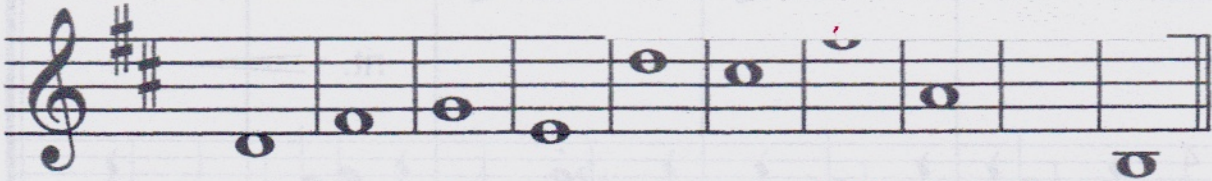




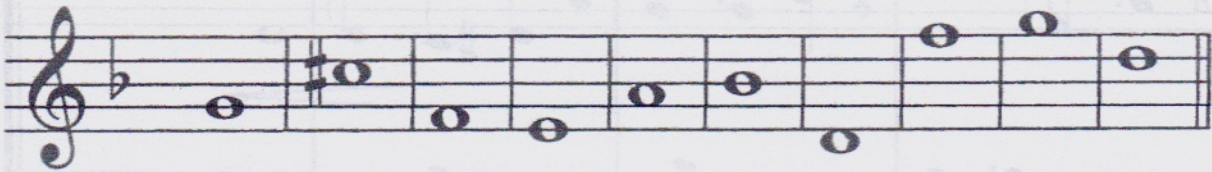
Name Th

Watch out
For key signature

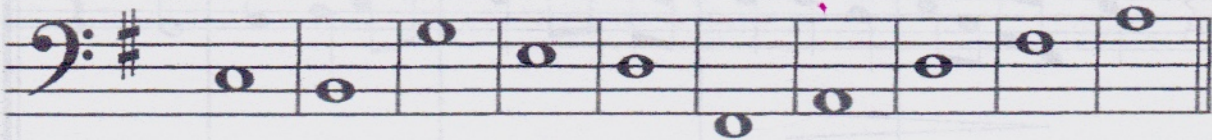
Name these notes.
Watch out for the key signature.



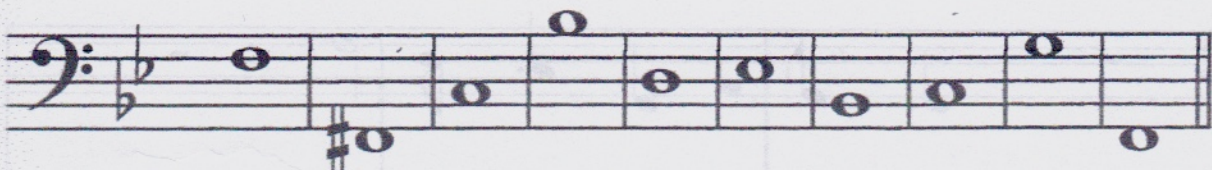
D F# G E D C# F# A A B



G C# F E A Bb D F G D



C B G E D F# A D F# A



F F# C Bb D Eb Bb C G F



Na

*Don't
rely on the*

Add the time signature and name th

Key of *D major*

Key of *D minor*

Key of *G major*

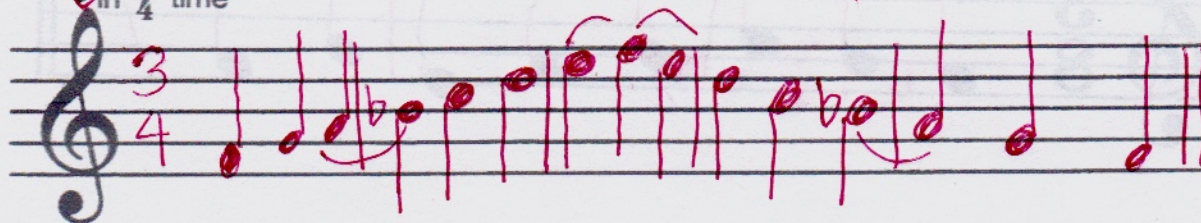
Key of *D minor*

More Scale Writing

Write F major scale:

- ascending and descending
- use accidentals
- mark the semitones/half steps
- in quarter notes
- add rests as necessary

✓ in $\frac{3}{4}$ time



Write Ab major scale: - Bb E A D^b YUCK!

- descending
- use accidentals
- in eighth notes
- show the treble clef
- mark the semitones/half steps
- add rests as necessary
- in $\frac{2}{4}$ time



Write Bb major scale: - Bb + E^b

- ascending and descending
- use accidentals
- in quarter notes
- show the bass clef
- add rests as necessary
- in $\frac{2}{2}$ time → same as 4





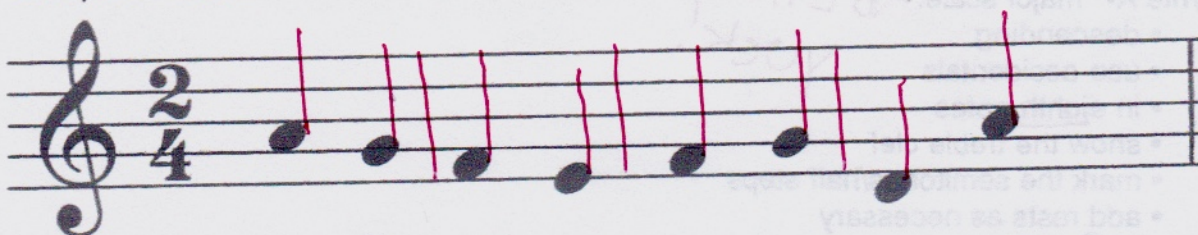
Stems, Beams And Rests

Add stems, beams and barlines as necessary to make the following excerpts in the correct time.
Complete with rests (at the end) as required.

Use eighth notes.



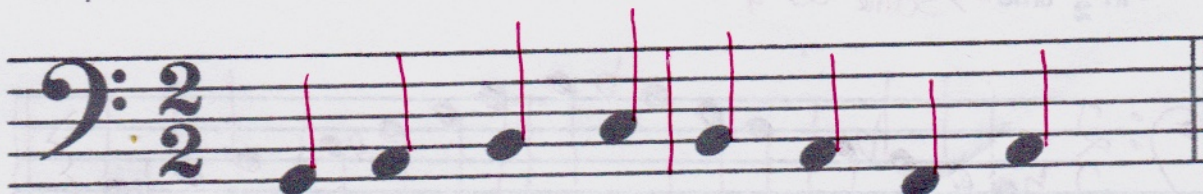
Use quarter notes.



Use eighth notes.



Use quarter notes.





Dance Of The Sunbeams

Leggero

Dorothy Berry Hammett

1 *mp* *maj 3* *L.H.* *m.d.*

5 *fine* *Finished*

9 *mp*

13 *D.C. al fine* *accidental*



Dance Of The Sunbeams

Analyze the following piece of music by answering the questions below.

i. Add the correct time signature directly on the music.

ii. Name the key of this piece G major

iii. Name the composer Dorothy Berry Hammett

iv. How many measures are in this piece? 16

v. Find and label directly on the music

- a I chord
- major 3
- an accidental
- a sign to play with your left hand
- a sign that means finished

vi. Define "Leggero" lightly