



# What Is A Time Signature?

What is a Time Signature?

Tells how many beats are in a measure + what gets one beat

What does the top number mean?

tells how many beats per bar/measure

What does the bottom number mean?

what kind of note gets one beat

$\frac{2}{4}$  2 beats to the measure and the  
quarter note receives one beat.

$\frac{6}{8}$  6 beats to the measure and the  
eighth note receives one beat.

$\frac{3}{4}$  3 beats to the measure and the  
quarter note receives one beat.

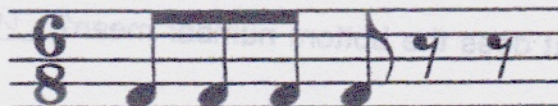
$\frac{4}{4}$  4 beats to the measure and the  
quarter note receives one beat.

$\frac{3}{8}$  3 beats to the measure and the  
eighth note receives one beat.


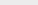
$\frac{3}{2}$  3 beats to the measure and the  
half note receives one beat.



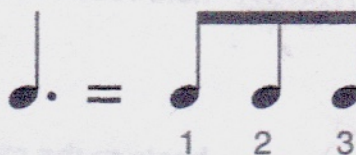
8 = the eighth note receives one beat.



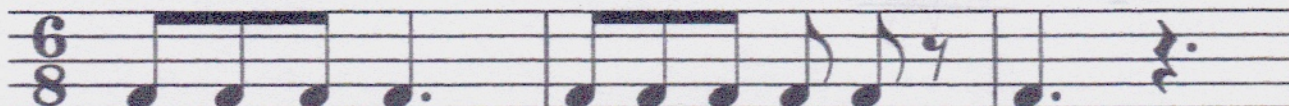
1 2 3 4 5 6

In  $\frac{6}{8}$  time, the eighth note or eighth rest, receives one beat.  = 1  = 1


The quarter note dot receives three beats.




### More Examples:

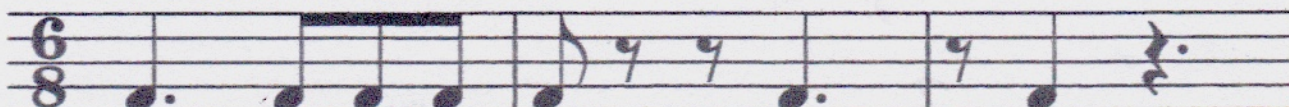


1 2 3 4 5 6 1 2 3 4 5 6 1 2 3 4 5 6

Quarter note dot  = 3 beats

Quarter rest dot  = 3 beats

Write in the "counts" below these notes and rests.

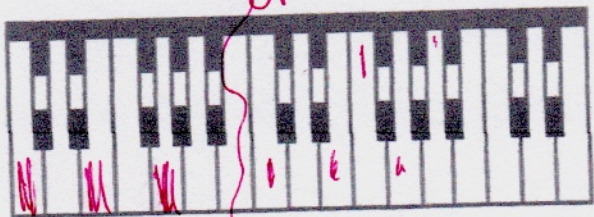


1 2 3 4 5 6   1 2 3 4 5 6   1 2 3 4 5 6

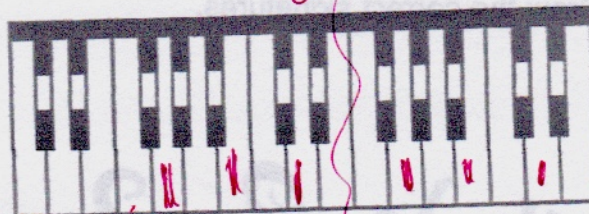


# Root Position Triads To Play

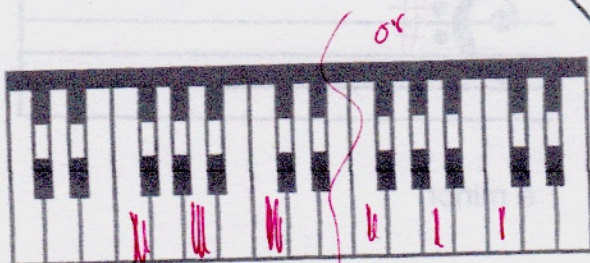
Color the triad in root position and play with right hand.



Color the keys of the C triad. Play.



Color the keys of the G triad. Play.

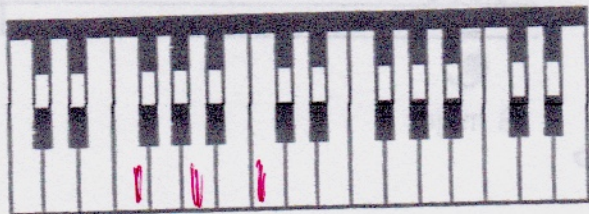


Color the keys of the F triad. Play.

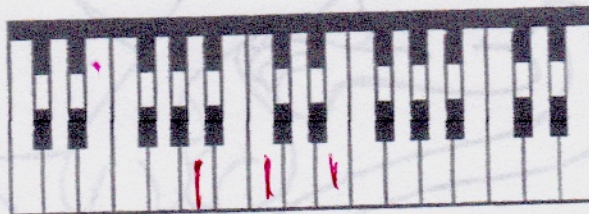


Color the keys of the a minor triad. Play.

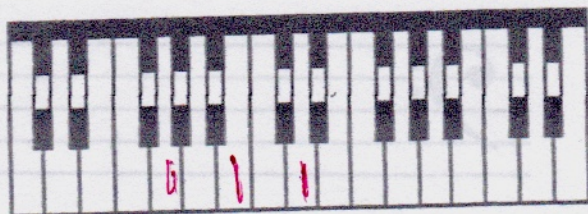
Color the triad in root position and play with left hand.



Color the keys of the F triad. Play.



Color the keys of the a minor triad. Play.



Color the keys of the G triad. Play.

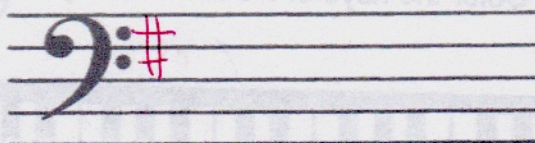


Color the keys of the C triad. Play.

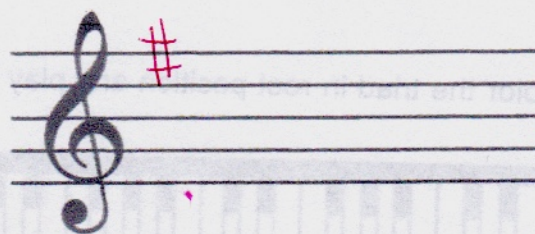


# Kitty's Key Signatures

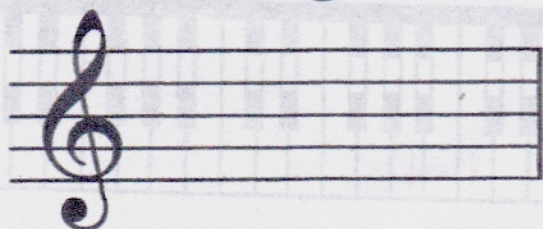
These cats have forgotten their key signatures. Help them please.  
Draw the correct signatures.



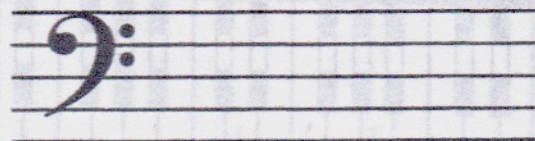
e minor



G major



a minor



C major