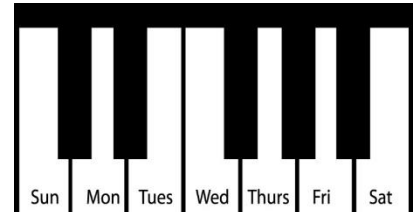
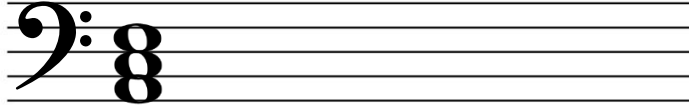








# Sunbeams 2

Lesson # 10



Tin sheet at home: New chord: ACE



		Sun	Mon	Tues	Wed	Thurs	Fri	Sat
<b>Keyboard</b>  	<b>K-14</b> try playing it a little faster this week							
	<b>*KS-88</b> learn RH then add C Chords							
	<b>K-16</b> week 2							
	<b>K-9</b> RH in a- - aaeeffe, ddcbbba							
<b>Toolbox</b>  	<b>November Notes (26):</b> do all your flashcards with no mistakes!							
	<b>W-33</b> line 1 <b>Chord Chart:</b> Play a- harmonic scales with <b>RED</b> chord							
<b>Homework</b>  	<b>H-22</b> bottom of keyboard is middle C							
	<b>H-20</b>							
<b>Singing</b>  	<b>S-11</b>							
	<b>S-6</b>							
<b>Listening</b>  	<b>Andante</b> = walking speed <b>Moderato</b> = medium speed							
<b>Rhythm Ensemble</b>  	<b>Rhythm Stories: use ta dot ti</b>							
	<b>E-4/5</b>							

Your child may want to point for themselves for hands separate playing. Encourage this! It is a child's way of "owning" their ability to track and decode the symbols.

Sight-reading is playing a new piece and integrating rhythm (duration of notes) and pitches (note on the keyboard). Sight-reading is best accomplished at a slow speed.

The eye-ear-brain-hand loop is an information processing skill that develops over time. It requires patience from teacher, student and parent. Confidence is key in the reading process.