

Different Notes



Draw 4 different C's



Draw 4 different F's



Draw 4 different G's



Fill in the note names to read the secret message.



Th e b i g d o g b e g s



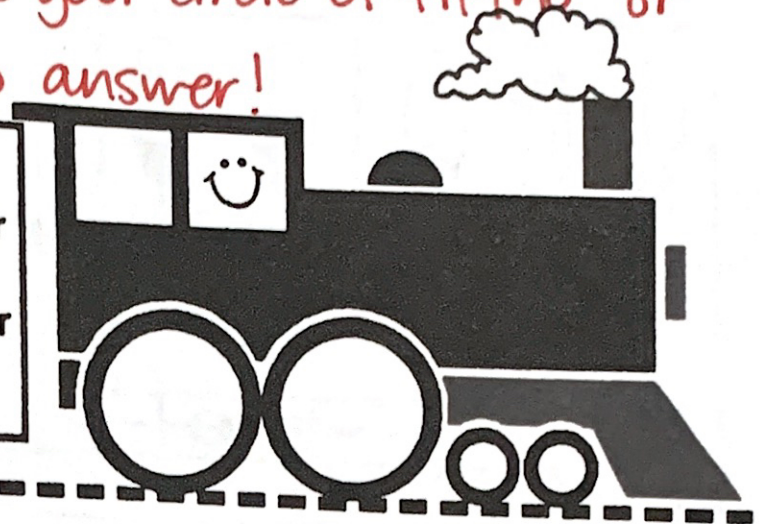
f or a b i g b on e.

Train Car Keys

** if you are struggling, use your circle of fifths or write one on this page to answer!*

Name the cars in this train by their signatures.

E⁺ Major
c[#] minor



E^b Major
c minor

B^b Major
g minor

A^b Major
f minor

D Major
b minor

F Major
d minor

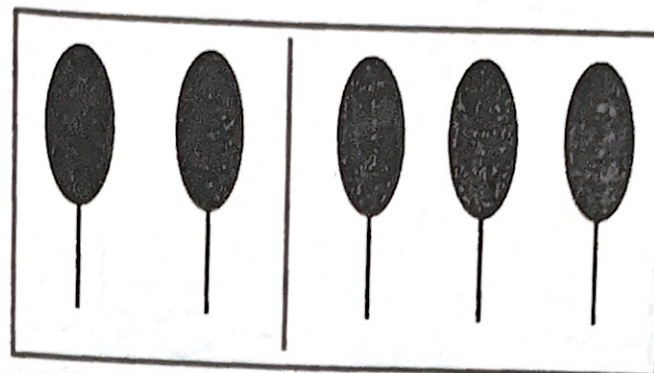
A Major
f[#] minor



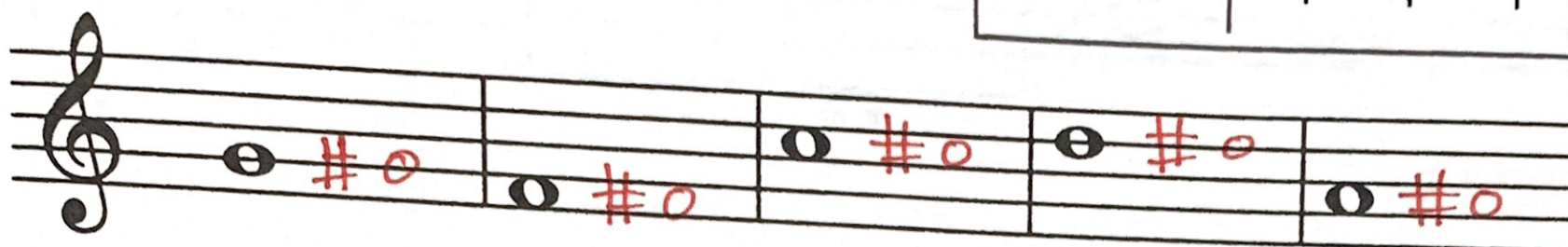
Chromatic Semitones/Half Steps

C - C \sharp

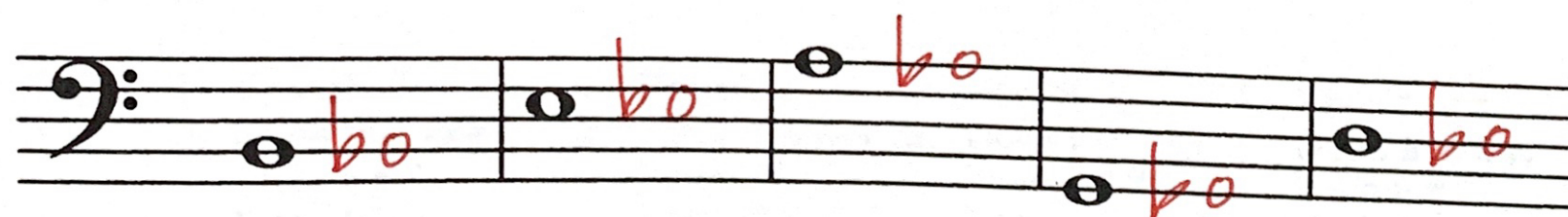
C - C \flat



Write the note that is a chromatic semitone/half step above the following:



Write the note that is a chromatic semitone/half step below the following:



Discovering Intervals

Circle the correct answer.



Interval exercises on a treble clef staff:

- Interval 1: F⁺ = B^b (M2 / m2)
- Interval 2: G⁺ = F[#] (M6 / m6)
- Interval 3: D⁺ = F[#] C[#] (M7 / m7)
- Interval 4: G⁺ = F[#] (M3 / m3)
- Interval 5: C = D[#] (M6 / m6)

Interval exercises on a bass clef staff:

- Interval 1: G (Key of G)
- Interval 2: A (Key of A)
- Interval 3: C (Key of C)
- Interval 4: D (Key of D)

1. Key of G
2. Does this key have E?
Yes / No
3. M6 / m6

1. Key of A
2. Does this key have F[#]?
Yes / No
3. M6 / m6

1. Key of C
2. Does this key have A^b?
Yes / No
3. M6 / m6

1. Key of D
2. Does this key have F?
Yes / No
3. M3 / m3

Interval exercises on a treble clef staff:

- Interval 1: D (Key of D)
- Interval 2: C (Key of C)
- Interval 3: D (Key of D)
- Interval 4: G (Key of G)

1. Key of D
2. Does this key have F[#]?
Yes / No
3. M3 / m3

1. Key of C
2. Does this key have E?
Yes / No
3. M3 / m3

1. Key of D
2. Does this key have C^b?
Yes / No
3. M7 / m7

1. Key of G
2. Does this key have F[#]?
Yes / No
3. M7 / m7