

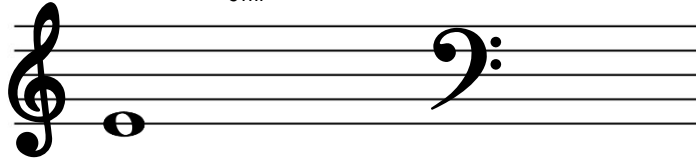
Sunshine 2

Lesson # 2



Tin sheet at home:

Write patterns on your tinsheet,
stepping up, stepping down, standing
still



Sun Mon Tues Wed Thurs Fri Sat

Keyboard Toolbox 	Warmup: H-5 RH and LH ascending (up) and descending (down) - RH 12312345 - LH 54321321						
	W-12 - Clap first with RW (Rhythm Words) out loud						
	K-3 K-4						
	W-43 #1						
Homework 	H-4						
	H-7						
Singing 	S-4 sing and put magnets on the tinsheet						
	Critter Songs: Creepy on the little line, Dino at the Door						
Listening 	L-10 high/low						
Rhythm Ensemble 	Rhythm Story						
	E-1 kids line 1, parents line 2, then switch!						

Notes from your teacher: