

Key Signatures

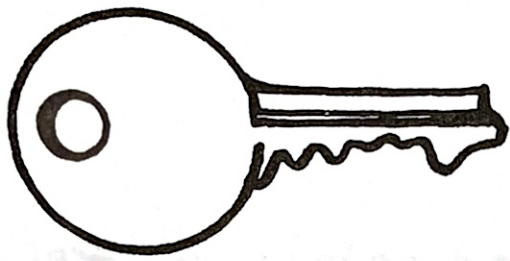


Write these key signatures in the opposite clef.

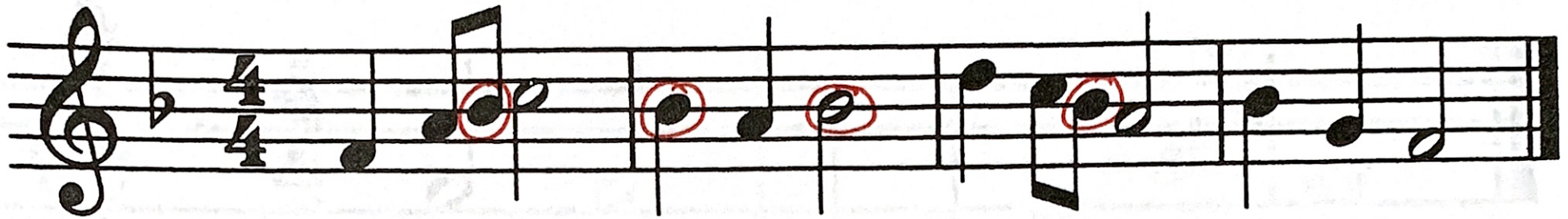
A musical staff with two staves, treble and bass, connected by a brace on the left. The staff is divided into four measures. In the first measure, the treble clef has two sharps (F# and C#) and the bass clef has one sharp (F#). In the second measure, the treble clef has two sharps (F# and C#) and the bass clef has two sharps (F# and C#). In the third measure, the treble clef has one sharp (F#) and the bass clef has one flat (Bb). In the fourth measure, the treble clef has two sharps (F# and C#) and the bass clef has two sharps (F# and C#).

Write these key signatures in the both clefs.

A musical staff with two staves, treble and bass, connected by a brace on the left. The staff is divided into four measures. In the first measure, the treble clef has no sharps or flats (labeled 'C (nothing)' in red) and the bass clef has no sharps or flats. In the second measure, the treble clef has one sharp (F#) and the bass clef has one sharp (F#). In the third measure, the treble clef has two sharps (F# and C#) and the bass clef has two sharps (F# and C#). In the fourth measure, the treble clef has one flat (Bb) and the bass clef has one flat (Bb).



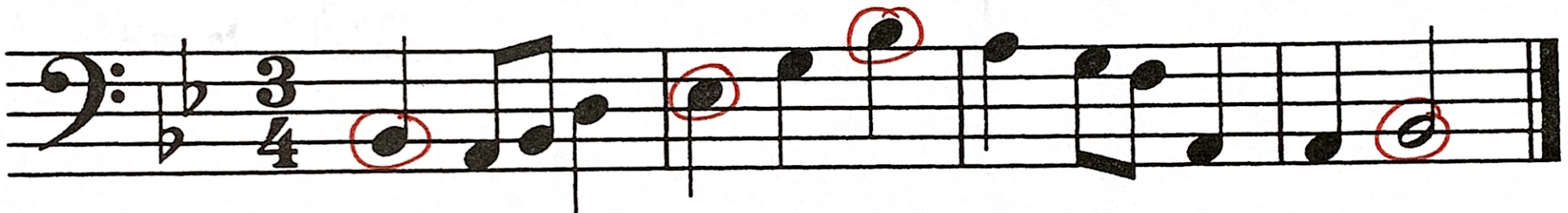
What Is The Key?



What is the key of this melody? F+

What note is flat? Bb

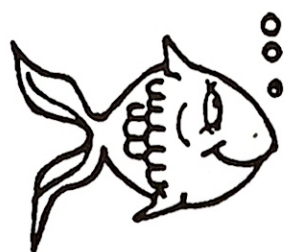
Circle all the notes that are played flat.



What is the key of this melody? Bb+

What notes are flat? B+E

Circle all the notes that are played flat.



Scale Search

Handwritten annotations and circled scales in the grid:

- F major scale:** F, C, D, E, F, G, A, B, C (circled in red)
- C major scale:** C, D, E, F, G, A, B, C (circled in red)
- G major scale:** G, A, B, C, D, E, F#, G (circled in red)
- A natural scale:** A, B, C, D, E, F, G, A (circled in red)
- Bb major scale:** Bb, C, D, Eb, F, G, A, Bb (circled in red)
- B natural scale:** B, C, D, E, F, G, A, B (circled in red)
- D major scale:** D, E, F#, G, A, B, C, D# (circled in red)
- e minor harmonic scale:** E, F#, G, A, B, C, D# (circled in red)
- F major scale:** F, G, A, B, C, D, E, F# (circled in red)
- d minor harmonic scale:** D, Eb, F, G, Ab, Bb, C (circled in red)
- b minor natural scale:** Bb, C, D, Eb, F, G, Ab, Bb (circled in red)
- Bb major scale:** Bb, C, D, Eb, F, G, Ab, Bb (circled in red)

Handwritten notes: *F#*, *C+*, *d-harm*, *G+*, *a-nat*, *b-natural*, *e-harm*, *D+*, *B+*.

F	C	D	E	F	G	A	B	C	Q	T	D	A	X
G	B	C	D	E	A	G	A	B	C	D	E	F#	G
A	A	B	C	D	E	F	G	A	R	O	F	B	O
Bb	C	D	Eb	F	G	A	Bb	B	S	P	G	C	R
C	F	A	G	D	B	C#	D	E	F#	G	A	B	I
D	E	F#	G	A	B	C	D#	E	M	V	Bb	E	M
E	D	E	F#	G	A	B	C#	D	B	C	C#	G	N
F	C	B	D	M	O	A	Q	R	M	B	D	G	O

Find C major scale. Put a blue around it.

Find a minor natural scale. Put a red around it.

Find G major scale. Put a green around it.

Find D major scale. Put a purple around it.

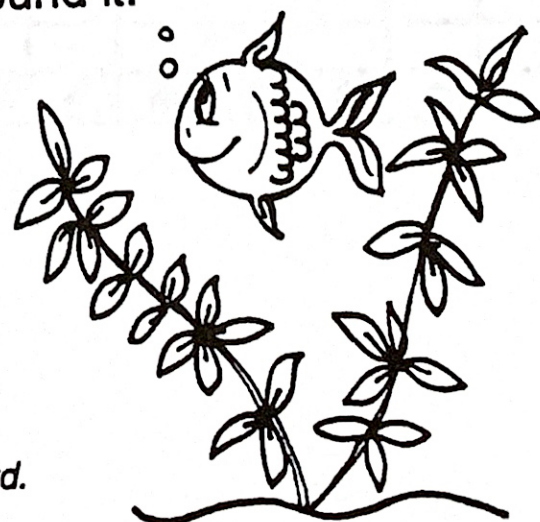
Find e minor harmonic scale. Put a brown around it.

Find the F major scale. Put a yellow around it.

Find the d minor harmonic scale. Put a black around it.

Find the b minor natural scale. Put an orange around it.

Find the Bb major scale. Put a pink around it.



Rhythms

Sally tried hard to write some $\frac{4}{4}$ rhythms.

You be her teacher and mark her work right (✓) or wrong (x).

Correct any mistakes you find.



#1.



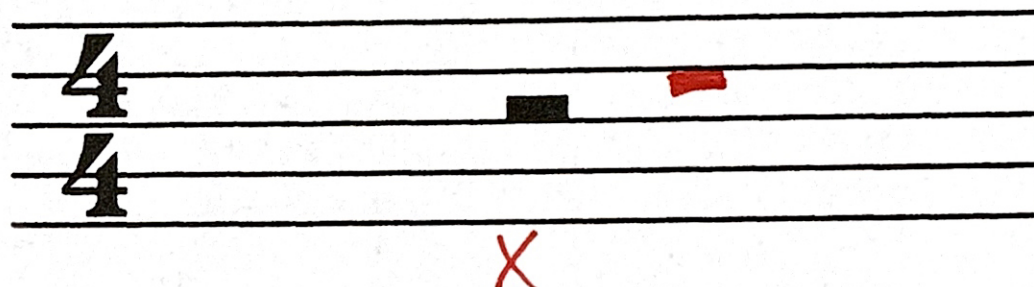
#2.



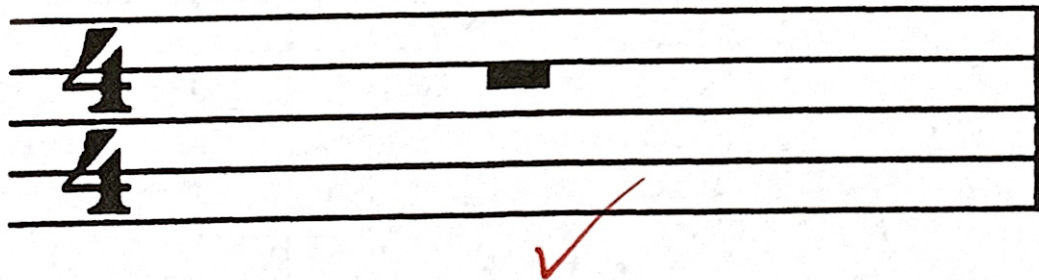
#3.



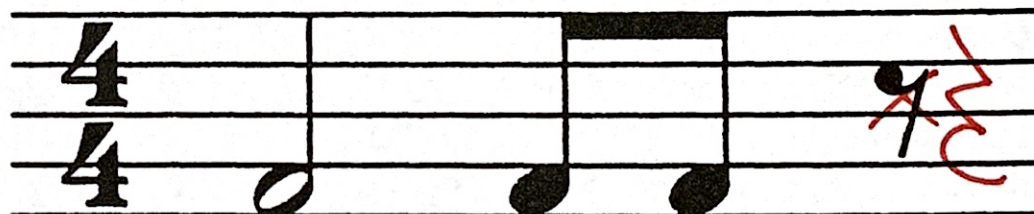
#4.



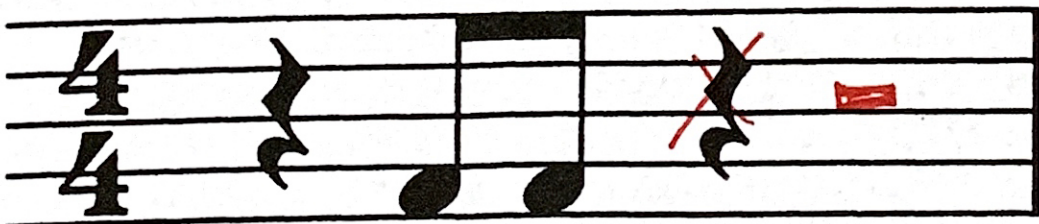
#5.



#6.



#7.



#8.

