

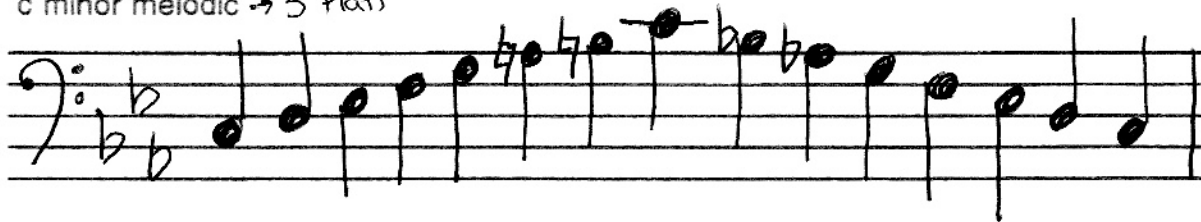
Scale Practice

Write the following scales

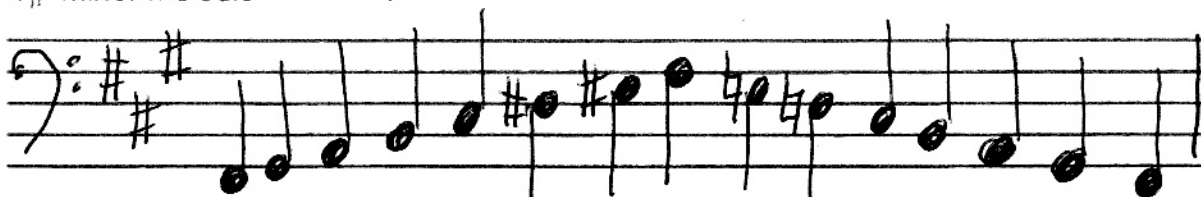
- in the bass clef
- ascending and descending
- use a key signature
- in quarter notes
- use accidentals only when necessary



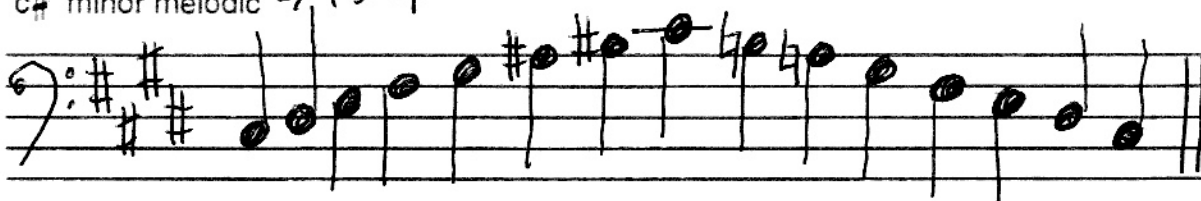
c minor melodic → 3 Flats



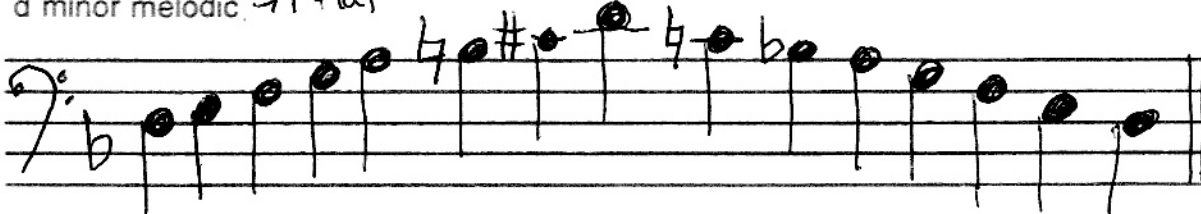
f# minor melodic → 3 Sharps

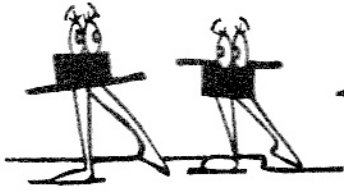


c# minor melodic → 4 Sharps



d minor melodic → 1 Flat





write
s row
New: 32

Complete each of these ba
bread tags or write the bas

.ted. Use your

Minor Triads

and fifth notes of any major scale.

...one. This is exactly the same way we lowered the interval of a third a semitone. (You will notice that the minor triad is the first, third and fifth notes of the minor scale)

A musical staff in treble clef showing a scale of notes: C, D, E, F, G, A, B, C. Below the staff, two triads are shown: a major triad (C, E, G) and a minor triad (C, E-flat, G).

major triad minor triad

Write these triads.

A musical staff in treble clef with four triads: CM triad (C, E, G), cm triad (C, E-flat, G), FM triad (F, A, C), and fm triad (F, A-flat, C).

CM triad cm triad FM triad fm triad

A musical staff in bass clef with four triads: GM triad (G, B, D), gm triad (G, B-flat, D), AM triad (A, C, E), and am triad (A, C-flat, E).

GM triad gm triad AM triad am triad

Play these and hear their special sound!

Four diagrams of triads, each with a black bar above the top note. The first is DM (D, F, A) with a sharp sign. The second is dm (D, F-flat, A) with a flat sign. The third is CM (C, E, G) with a sharp sign. The fourth is cm (C, E-flat, G) with a flat sign.

DM dm CM cm

Alsacienne

Tempo di Valse

Francis Thome

1

mf espressivo

B C

5

D E F A



Alsacienne

Analyze the following piece of music by answering the questions below.

a. Add the correct time signature directly on the music.

b. Name the key of this piece. D major

c. Name the composer. Francis Thorne

d. Add the rest(s) at letter A. 7

e. Name the intervals at the following letters.

B m3

C M3

D P5

f. Define "Espressivo". Expressive

g. Name the notes at the following letters.

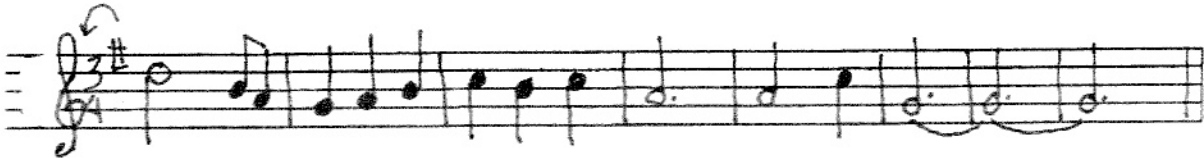
E F#

F A



Correct The Errors

1. Correct the errors:



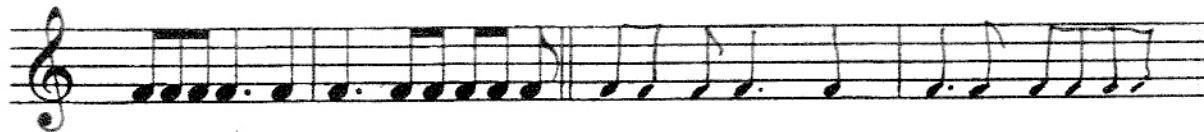
2. Correct the errors:



3a. Regroup these notes to make 4 measures of 3/8 time.



3b. Regroup these notes to make 4/4 time.



3c. Regroup these notes to make 3/4 time. You will need 3 measures.



Write The Time Signatures



Write the time signatures for the following.

4
4

3
4

6
8

4
5