

It's Raining!



Name all the raindrops.

F D A E C F

F D A G E A

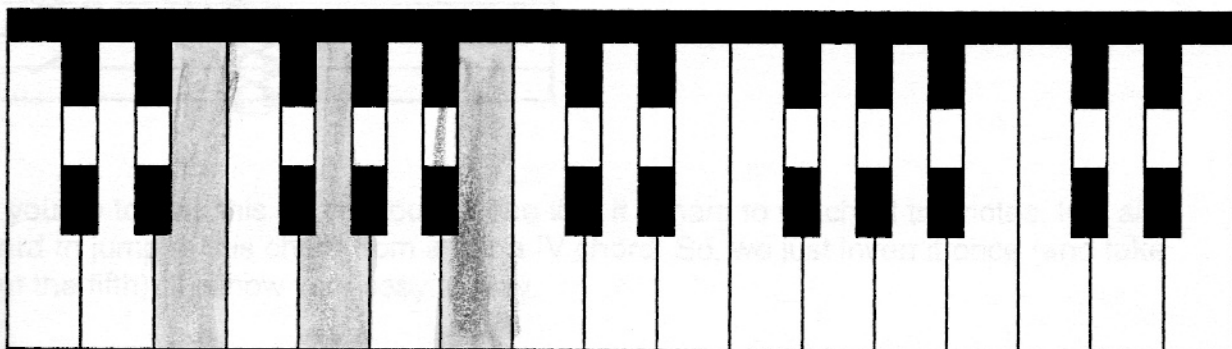
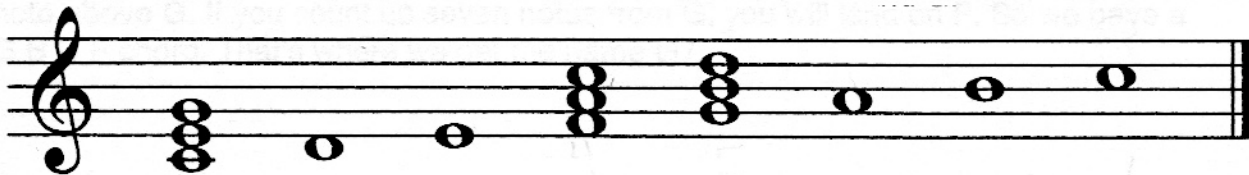
D C F A F C



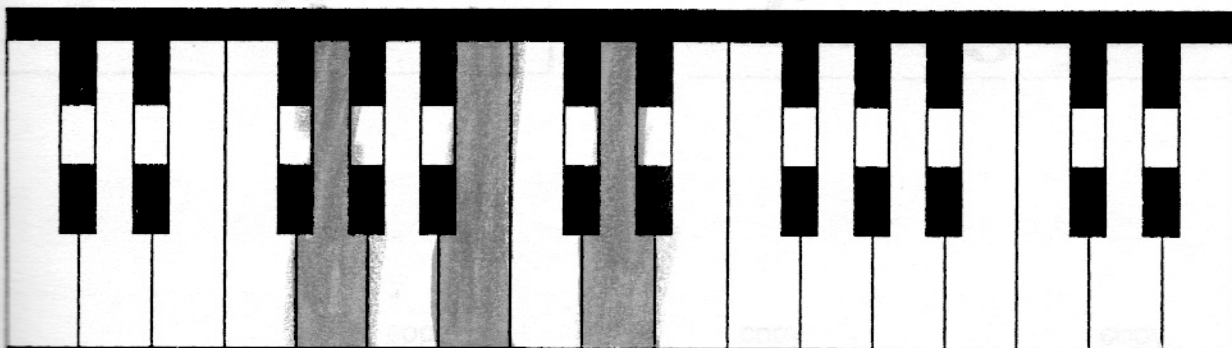
Primary Chords

Primary chords are built on the first, fourth, and fifth notes of a scale. That is why they are called I, IV, V.

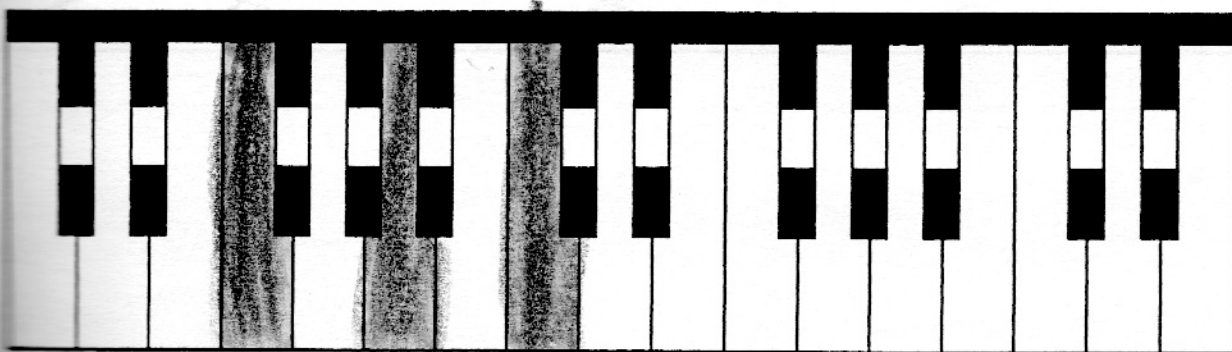
In the key of C major, very important chords are built on C, F and G.



Color a C major triad.



Color a G major root position triad.

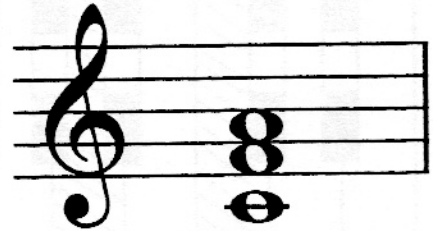
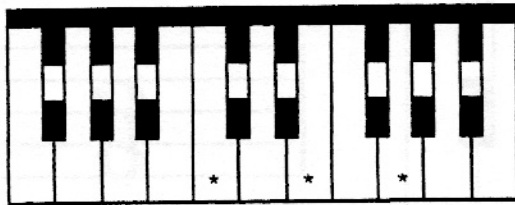


Color an F major root position triad.

Primary Chords in C Major

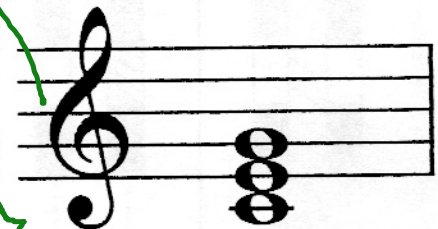
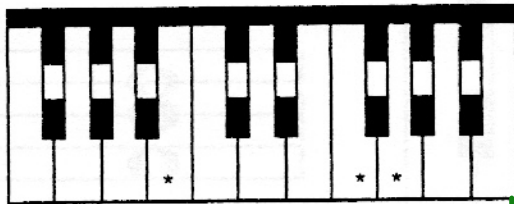
Name the chord with a letter name and circle the chord symbol.

Draw a line from the chord on the keyboard to the same chord on the staff.



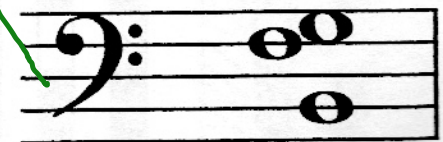
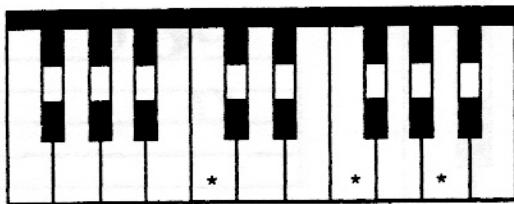
Name F

Circle I IV V7



Name C

Circle I IV V7



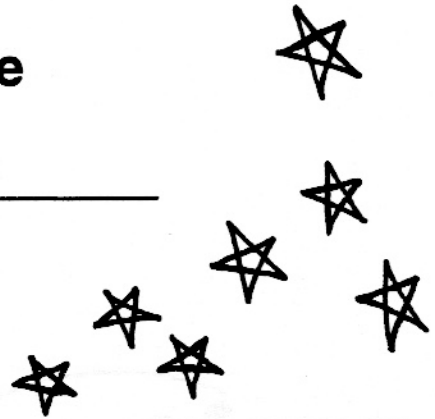
Name G7

Circle I IV V7



Name That Tune

So Long, Farewell



This is a song that you know. Draw the barlines.



Instrument Scramble

Find the instrument names.

Z O P D M R P V O O L A B T V
 H A R M O N Y I Z O M T A M T
 G U I T A R S O Q P T R S O S
 R B T D O U B L E B A S S B Q
 T A V Q B M E I M A Y Z O Z T
 P I C C O L O N B E V I O L A
 F L U T E L O C L A R I N E T
 T R O M B O N E F R E N C H H
 S M I T H B R L Q R S T U V O
 T R U M P E T L D R U M S B R
 X Y L O P L Z O R G A N R S N

Word Bank

HARMONY

VIOLIN

CELLO

VIOLA

GUITARS

ORGAN

TROMBONE

DOUBLE BASS

DRUMS

PICCOLO

TRUMPET

OBOE

BASSOON

FRENCH HORN

CLARINET

FLUTE

