

Key Signatures

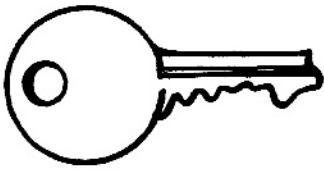


Write these key signatures in the opposite clef.

A grand staff with two staves. The top staff has a treble clef and the bottom has a bass clef. The exercise consists of four measures. In each measure, a key signature is written in the top staff and its opposite is written in the bottom staff. Measure 1: Treble clef has one sharp (F#), Bass clef has one sharp (F#). Measure 2: Treble clef has two sharps (F#, C#), Bass clef has two flats (Bb, Eb). Measure 3: Treble clef has one flat (Bb), Bass clef has one flat (Bb). Measure 4: Treble clef has two sharps (F#, C#), Bass clef has two sharps (F#, C#).

Write these key signatures in the both clefs.

A grand staff with two staves. The top staff has a treble clef and the bottom has a bass clef. The exercise consists of four measures. In each measure, a key signature is written in both staves. Measure 1: Treble clef has no sharps or flats, Bass clef has no sharps or flats. Measure 2: Treble clef has one sharp (F#), Bass clef has one sharp (F#). Measure 3: Treble clef has two sharps (F#, C#), Bass clef has two sharps (F#, C#). Measure 4: Treble clef has one flat (Bb), Bass clef has one flat (Bb). The letters C, G, D, and F are written in the middle of each measure between the staves.



What Is The Key?



What is the key of this melody? F or F major

What note is flat? B^b

Circle all the notes that are played flat.

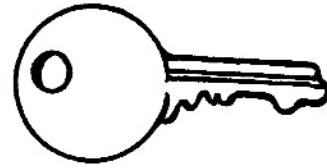


What is the key of this melody? B^b major

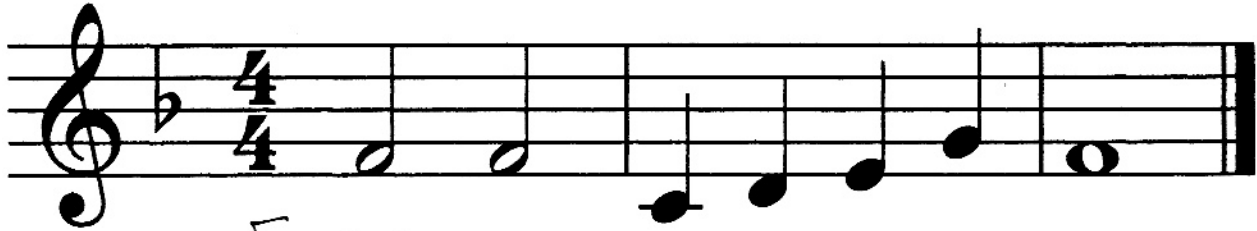
What notes are flat? B^b E^b

Circle all the notes that are played flat.

Name The Key



Name the key of each of these melodies.



Key of F major



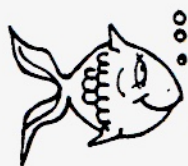
Key of G major



Key of C major



Key of D major



Scale Search

F	C	D	E	F	G	A	B	C	Q	T	D	A	X
G	B	C	D	E	A	G	A	B	C	D	E	F [#]	G
A	A	B	C	D	E	F	G	A	R	O	F	B	O
B ^b	C	D	E ^b	F	G	A	B ^b	B	S	P	G	C	R
C	F	A	G	D	B	C [#]	D	E	F [#]	G	A	B	I
D	E	F [#]	G	A	B	C	D [#]	E	M	V	B ^b	E	M
E	D	E	F [#]	G	A	B	C [#]	D	B	C	C [#]	G	N
F	C	B	D	M	O	A	Q	R	M	B	D	G	O

Find C major scale. Put a blue around it.

Find a minor natural scale. Put a red around it.

Find G major scale. Put a green around it.

Find D major scale. Put a purple around it.

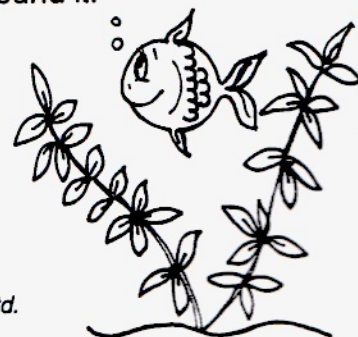
Find e minor harmonic scale. Put a brown around it.

Find the F major scale. Put a yellow around it.

Find the d minor harmonic scale. Put a black around it.

Find the b minor natural scale. Put an orange around it.

Find the B^b major scale. Put a pink around it.



Rhythms



Sally tried hard to write some $\frac{4}{4}$ rhythms.

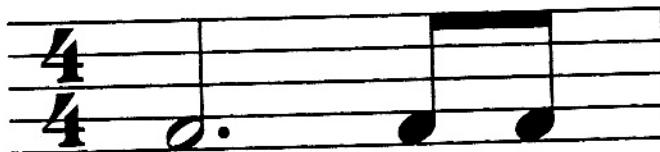
You be her teacher and mark her work right (\checkmark) or wrong (\times).

Correct any mistakes you find.

#1. \times



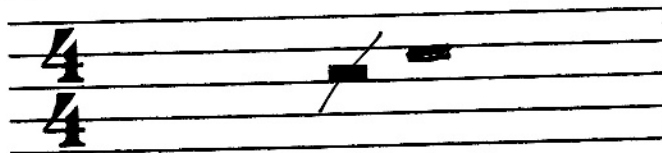
#2. \checkmark



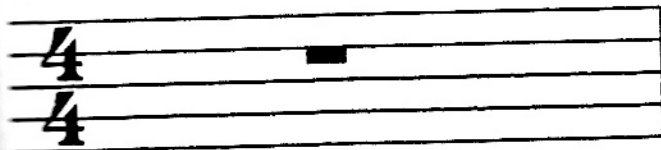
#3. \checkmark



#4. \times



#5. \checkmark



#6. \times



#7. \times



#8. \checkmark

