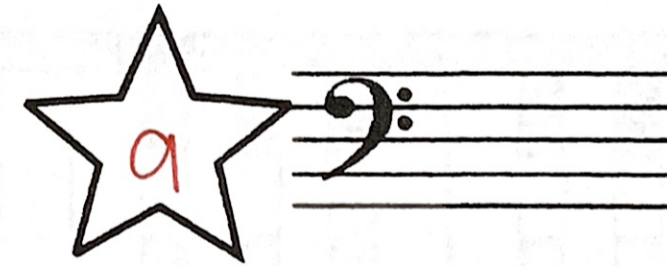
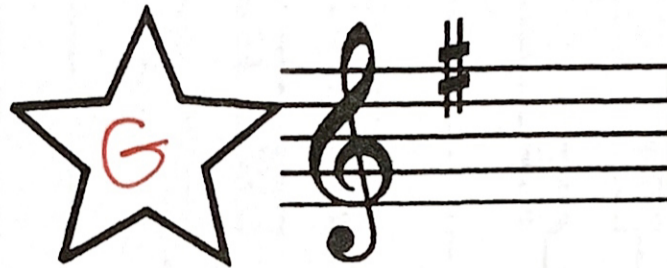


Key Names

Match the key name to the key signature.

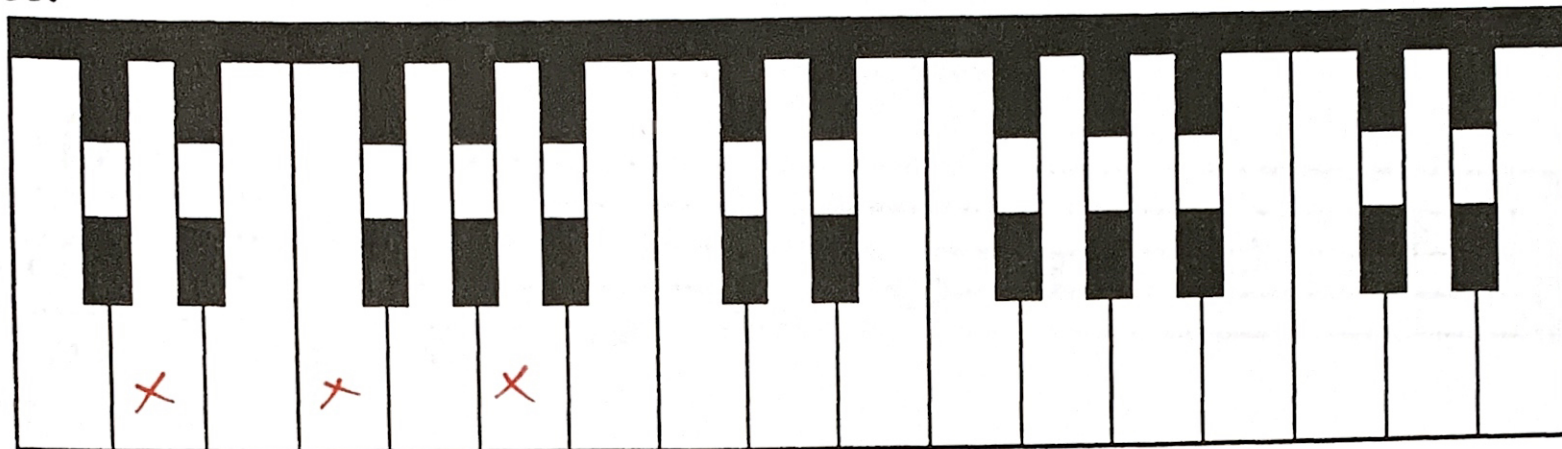




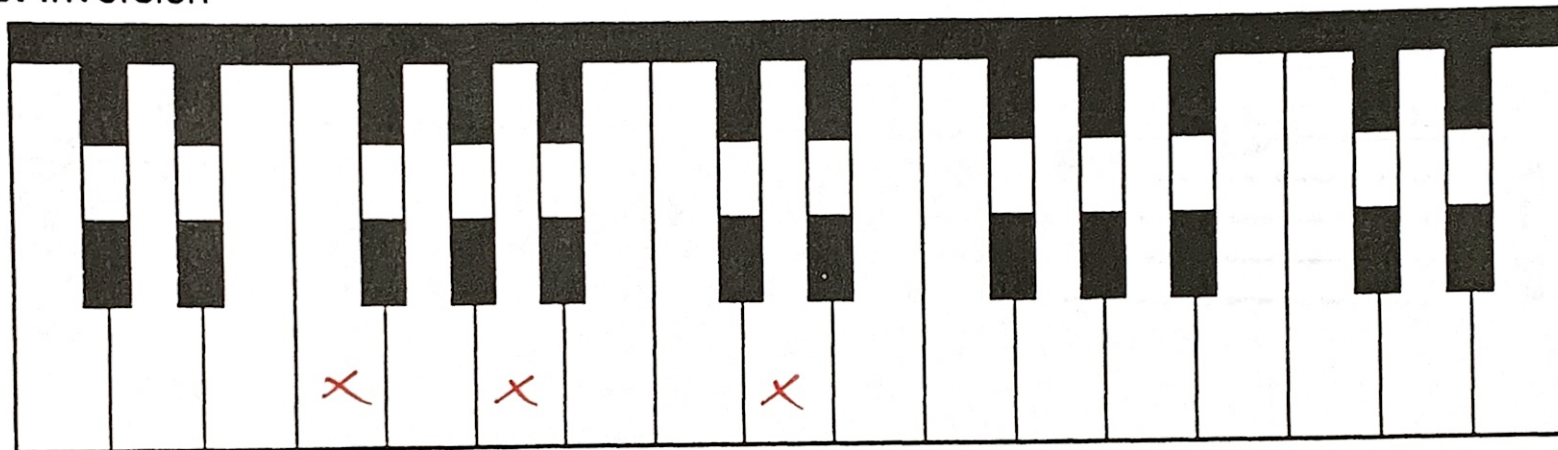
Color The Triads

d minor

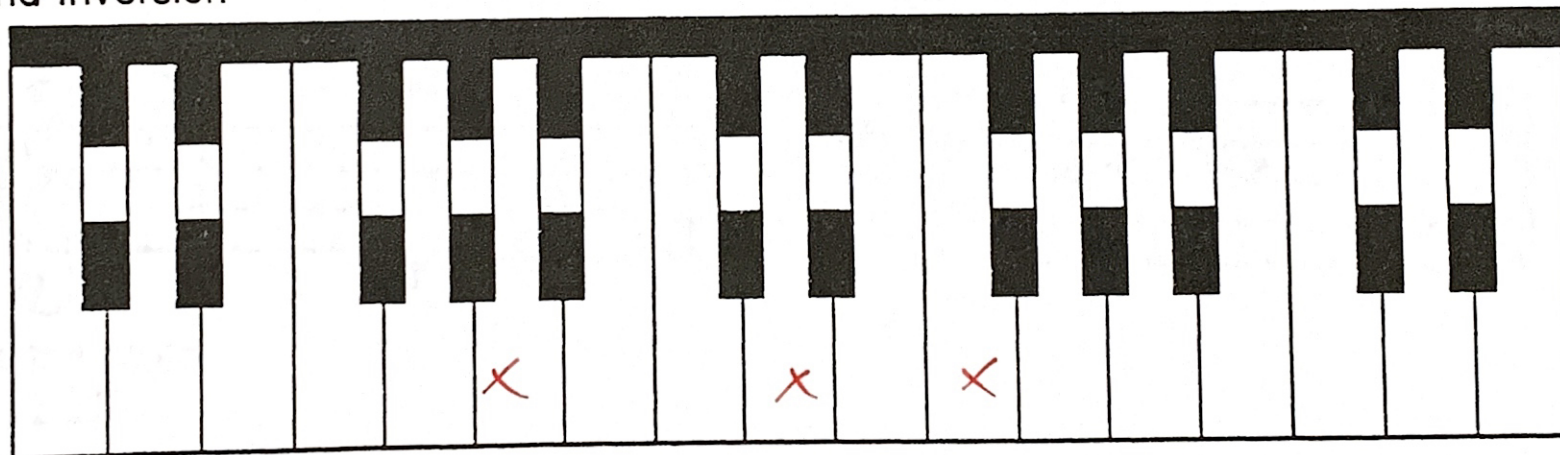
Root



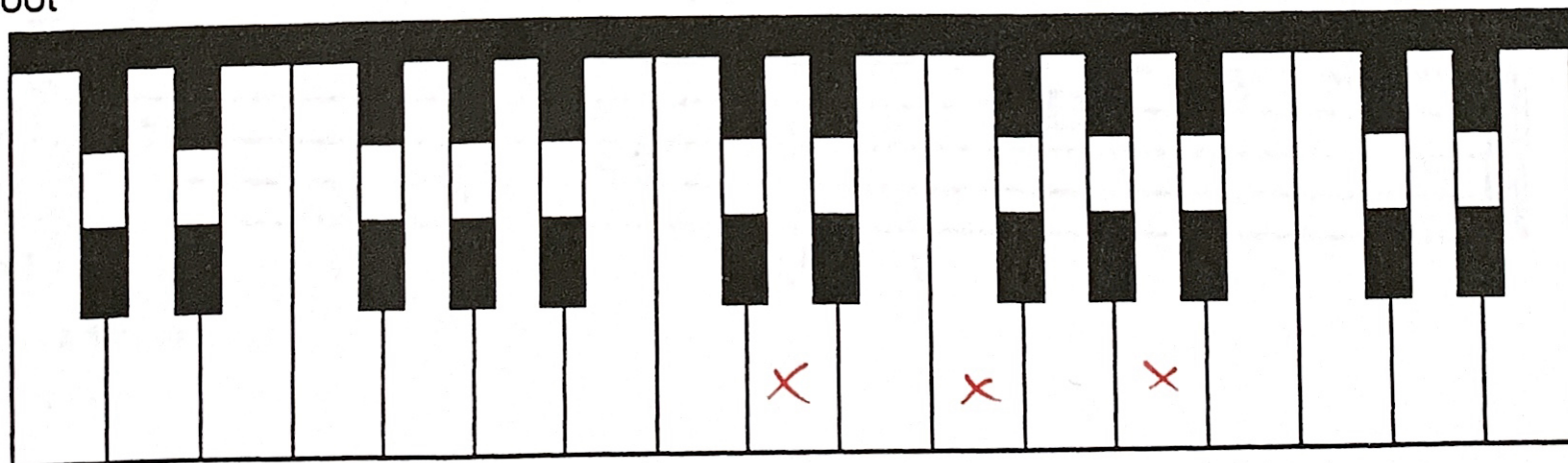
1st Inversion



2nd Inversion



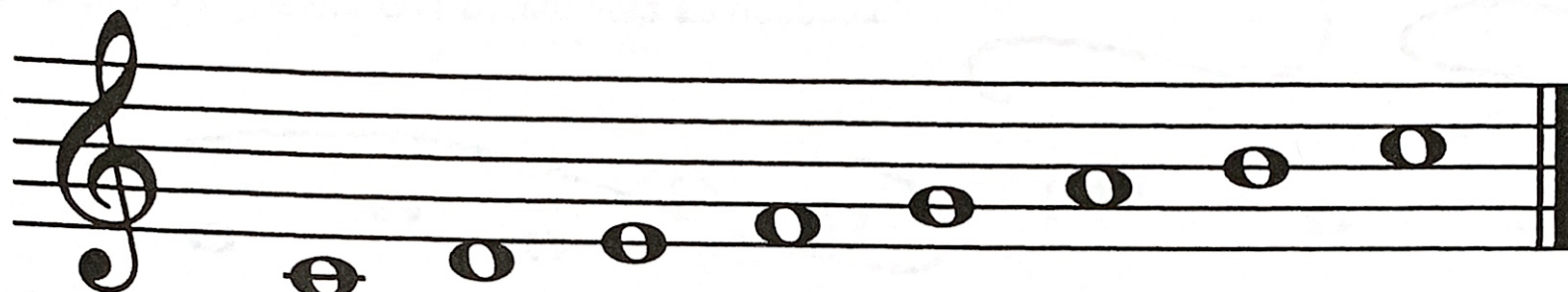
Root



Very Important Numbers (V.I.N.)

I, IV, V are very important.

Write I, IV, or V under the important notes of these scales.



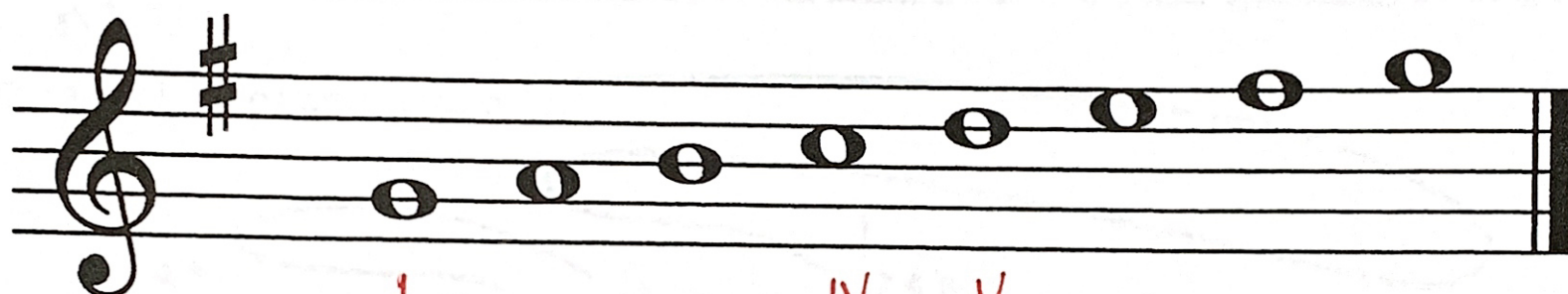
Name the scale

C+

I

IV

V



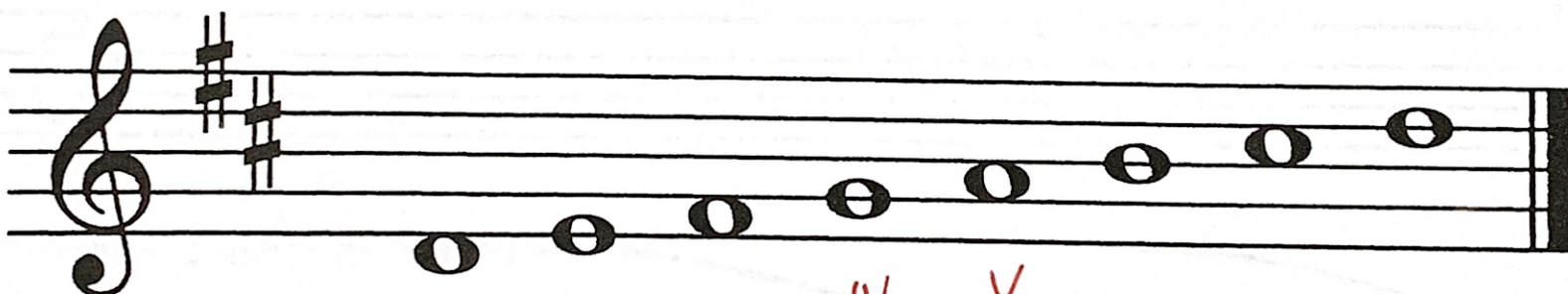
Name the scale

G+

I

IV

V



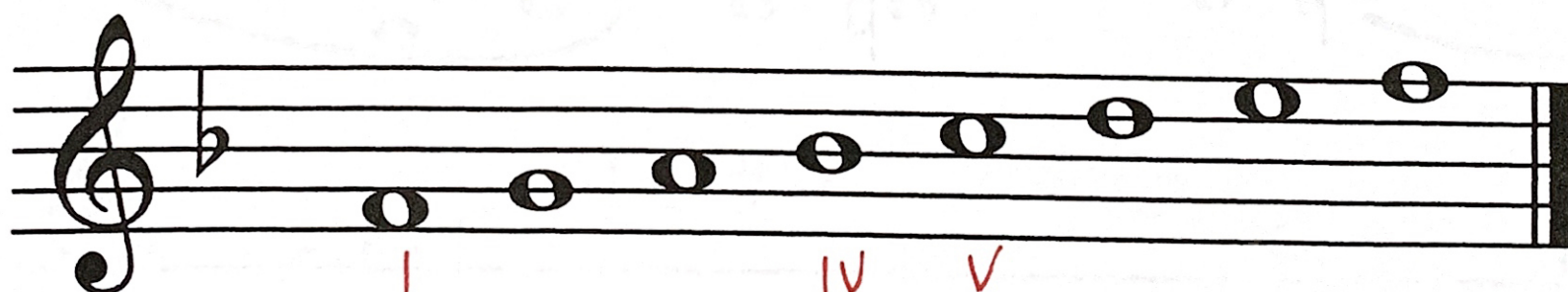
Name the scale

D+

I

IV

V



Name the scale

F+

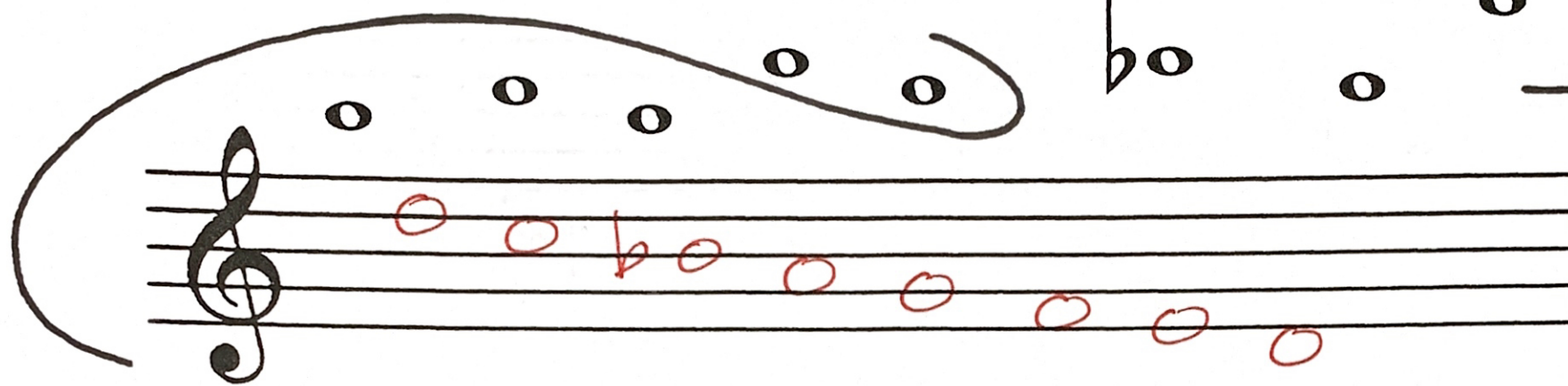
I

IV

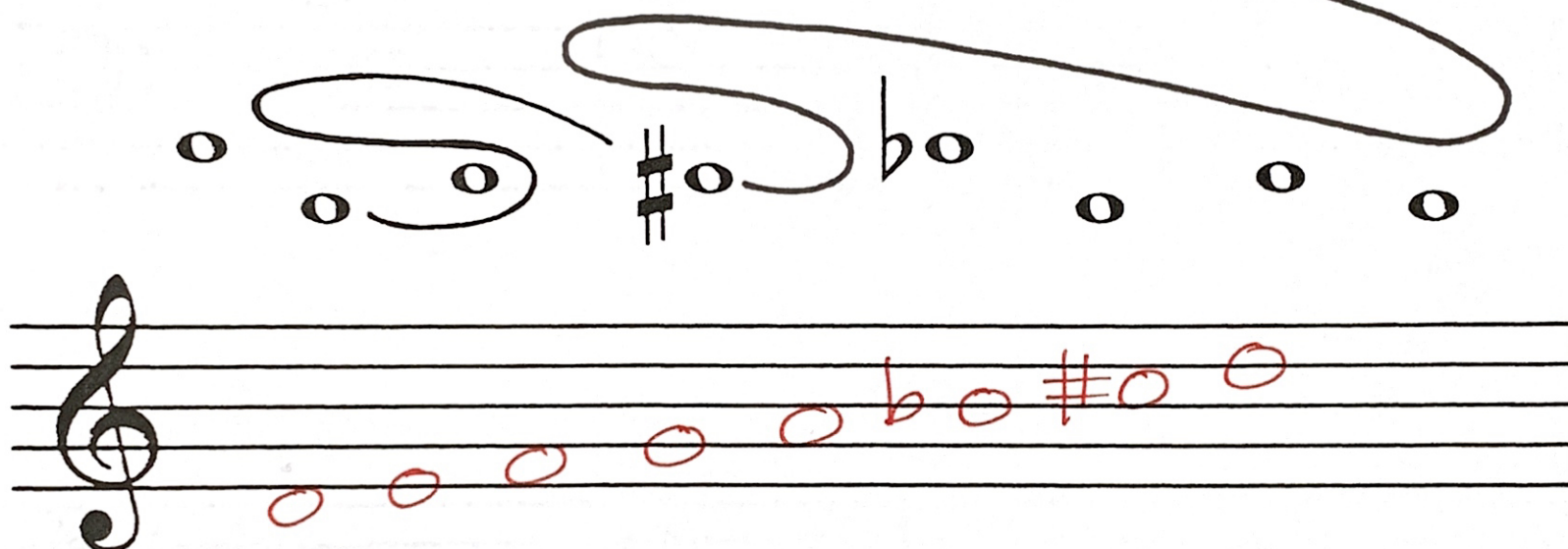
V

It's A Windy Day

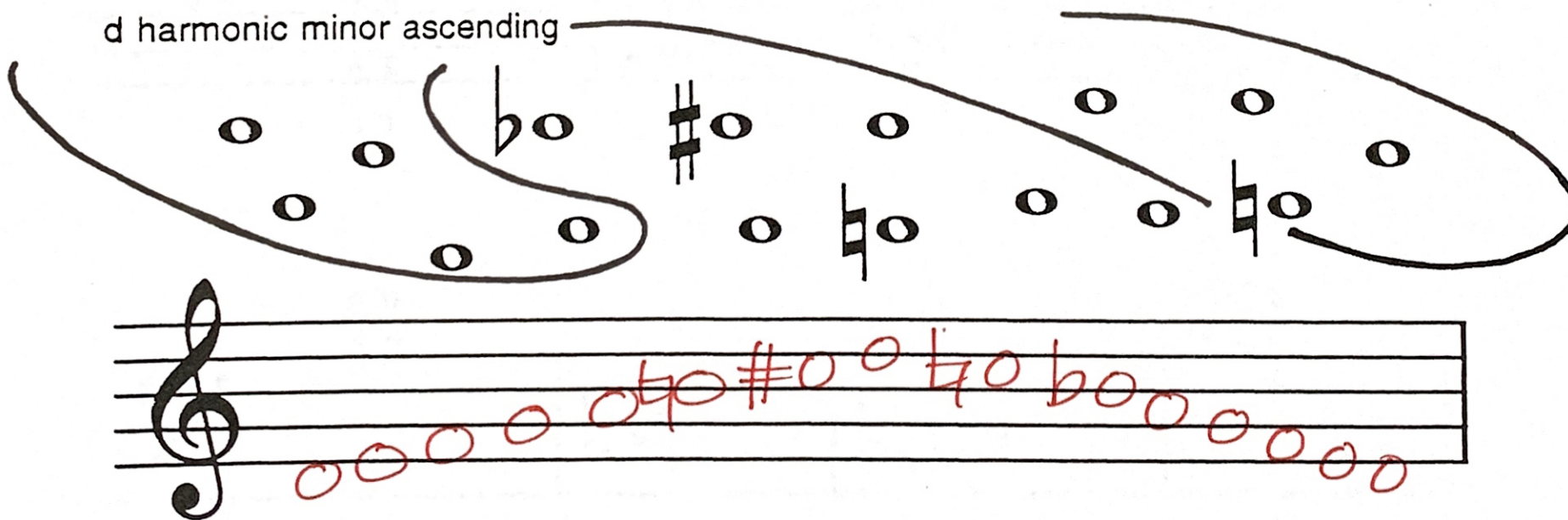
All the notes blew into the air.
Place them on the staff to make the scales.
Use a key signature and accidentals as necessary.



d natural minor descending



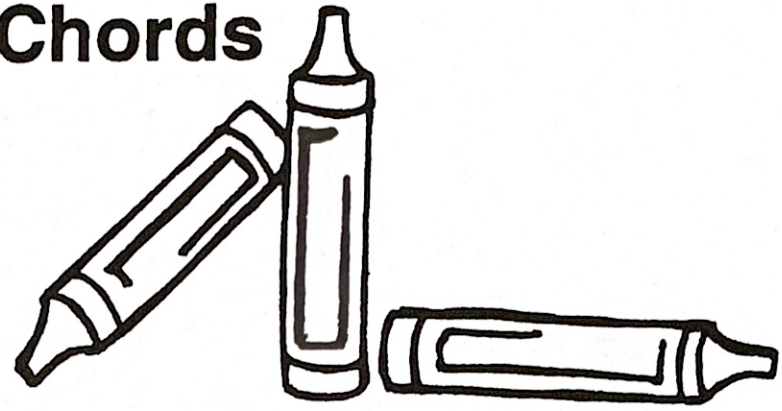
d harmonic minor ascending



d melodic minor ascending and descending

Coloring Chords

Color all the V7 chords "Red".
 Color all the root position chords "Yellow".
 Color all the 2nd inversion chords "Green".



First staff of music (bass clef, key signature of one sharp):

- Measure 1: V7 chord (F#4, C5, G4, B3) labeled "Red"
- Measure 2: Root position chord (C5, G4, F#4) labeled "Y"
- Measure 3: V7 chord (F#4, C5, G4, B3) labeled "R"
- Measure 4: 2nd inversion chord (C5, G4, F#4) labeled "G"

Second staff of music (bass clef, key signature of one sharp):

- Measure 1: V7 chord (F#4, C5, G4, B3) labeled "R"
- Measure 2: 2nd inversion chord (C5, G4, F#4) labeled "G"
- Measure 3: Root position chord (C5, G4, F#4) labeled "Y"
- Measure 4: V7 chord (F#4, C5, G4, B3) labeled "R"

Third staff of music (bass clef, key signature of one sharp):

- Measure 1: Root position chord (C5, G4, F#4) labeled "R"
- Measure 2: 2nd inversion chord (C5, G4, F#4) labeled "G"
- Measure 3: V7 chord (F#4, C5, G4, B3) labeled "R"
- Measure 4: 2nd inversion chord (C5, G4, F#4) labeled "G"

Fourth staff of music (bass clef, key signature of one sharp):

- Measure 1: Root position chord (C5, G4, F#4) labeled "R"
- Measure 2: V7 chord (F#4, C5, G4, B3) labeled "G"
- Measure 3: Root position chord (C5, G4, F#4) labeled "Y"
- Measure 4: 2nd inversion chord (C5, G4, F#4) labeled "G"