

# Music Terms

The tempo of a song is the Speed of the song.

Fill these words in the appropriate spaces below:

largo

allegretto

prestissimo

moderato

presto

andante

lento

adagio

allegro

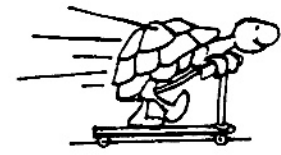
andantino

larghetto

SLOW

MEDIUM

FAST

largoAllegrettoAllegrolentoAndantinoprestoAdagioModeratoprestissimolarghettoAndante

List three music terms that show changes in tempo:

ritardando      accelerando      Fermata

a tempo  
tempo primo

# Dominant Triads



Build a root position triad on the dominant note of each scale below.  
Show accidentals instead of key signatures.

G major scale

Dominant triad

a minor harmonic scale

Dominant triad

b minor harmonic scale

Dominant triad

D major scale

Dominant triad

E major scale

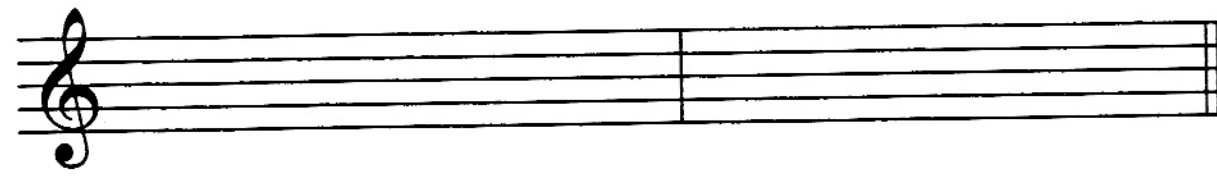
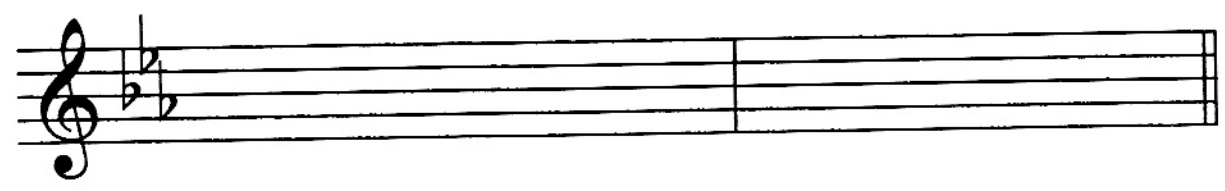
Dominant triad



# More Minor Melodies

Send to Abi if  
you did this one

Add two bars to complete the melody.



# Rest Challenges



Complete each bar with rests:

Musical staff 1 (Treble clef):

- Measure 1: 4/8 time signature. Notes: quarter, eighth, eighth, quarter. Rest: quarter.
- Measure 2: 3/4 time signature. Notes: quarter, quarter, quarter. Rest: quarter.
- Measure 3: 3/16 time signature. Notes: eighth, eighth, eighth, eighth, eighth, eighth, eighth, eighth, eighth, eighth, eighth, eighth. Rest: eighth.

Handwritten notes below staff 1:

- Measure 1: quarter, eighth, eighth, quarter.
- Measure 2: quarter, quarter, quarter.
- Measure 3: eighth, eighth, eighth, eighth, eighth, eighth, eighth, eighth, eighth, eighth, eighth, eighth.

Musical staff 2 (Bass clef):

- Measure 1: 4/2 time signature. Notes: quarter, quarter, quarter, quarter. Rest: quarter.
- Measure 2: 3/4 time signature. Notes: quarter, quarter, quarter. Rest: quarter.
- Measure 3: 4/4 time signature. Notes: quarter, quarter, quarter, quarter. Rest: quarter.

Handwritten notes below staff 2:

- Measure 1: quarter, quarter, quarter, quarter.
- Measure 2: quarter, quarter, quarter.
- Measure 3: quarter, quarter, quarter, quarter.

Musical staff 3 (Treble clef):

- Measure 1: 3/8 time signature. Notes: quarter, eighth, eighth. Rest: eighth.
- Measure 2: 3/2 time signature. Notes: quarter, quarter, quarter. Rest: quarter.
- Measure 3: 3/4 time signature. Notes: quarter, quarter, quarter. Rest: quarter.

Handwritten notes below staff 3:

- Measure 1: quarter, eighth, eighth.
- Measure 2: quarter, quarter, quarter.
- Measure 3: quarter, quarter, quarter.

Musical staff 4 (Bass clef):

- Measure 1: 2/8 time signature. Notes: quarter, quarter. Rest: quarter.
- Measure 2: 3/4 time signature. Notes: quarter, quarter, quarter. Rest: quarter.
- Measure 3: 3/4 time signature. Notes: quarter, quarter, quarter. Rest: quarter.

Handwritten notes below staff 4:

- Measure 1: quarter, quarter.
- Measure 2: quarter, quarter, quarter.
- Measure 3: quarter, quarter, quarter.



# Triads With Key Signatures

Write the following triads using a key signature.  
You also may need to use accidentals.

## 1. Tonic triads.

G major      f minor      F major      A major

## 2. Subdominant triads.

B $\flat$  major      D major      c minor      a minor

## 3. Dominant triads. (Remember to raise the seventh if needed in minor triads)

d minor      A $\flat$  major      c minor      f $\sharp$  minor