

Chromatic And Diatonic Semitones/Half Steps

Remember: Diatonic means Different, Chromatic means Common.

Draw a chromatic semitone/half step above these notes.



Draw a diatonic semitone/half step above these notes.

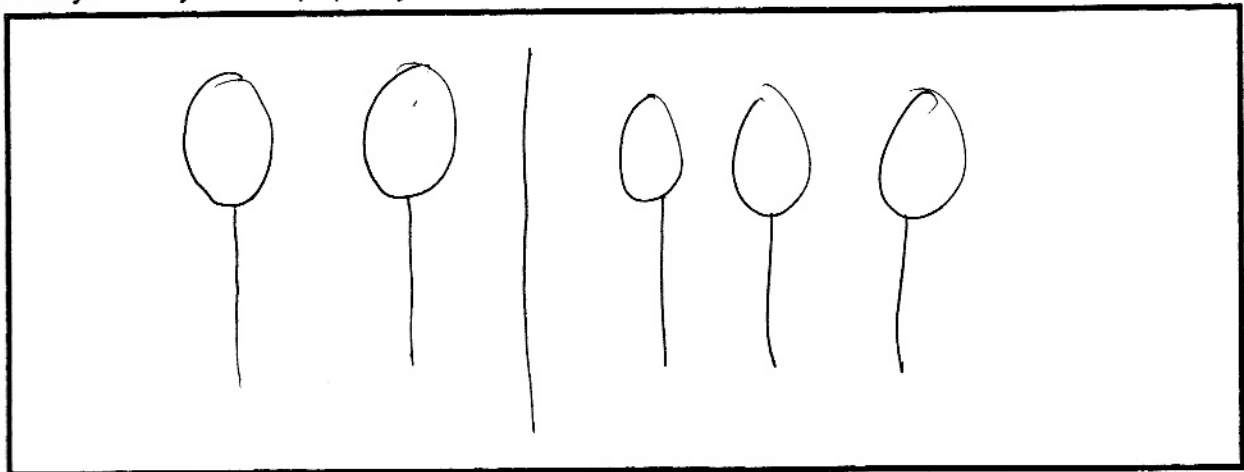


Draw a diatonic semitone/half step below these notes.

Draw a chromatic semitone/half step below these notes.



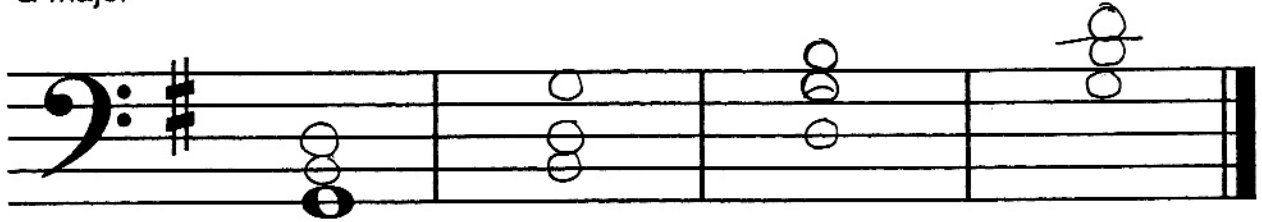
Always use your lollipop keyboard. Draw it here.



Triad Inversions

Draw the solid triads on the staff.

G major



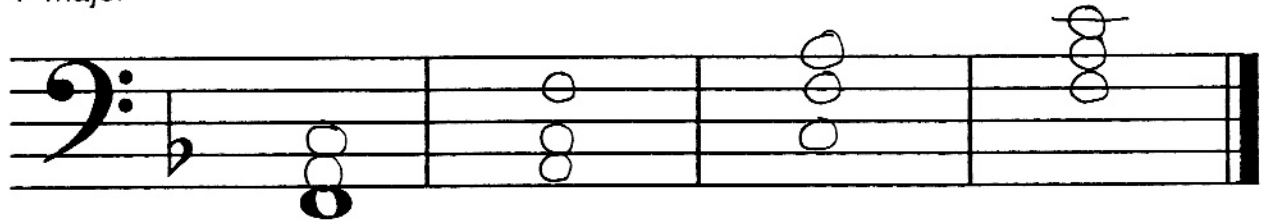
Root position

1st inversion

2nd inversion

Root position

F major



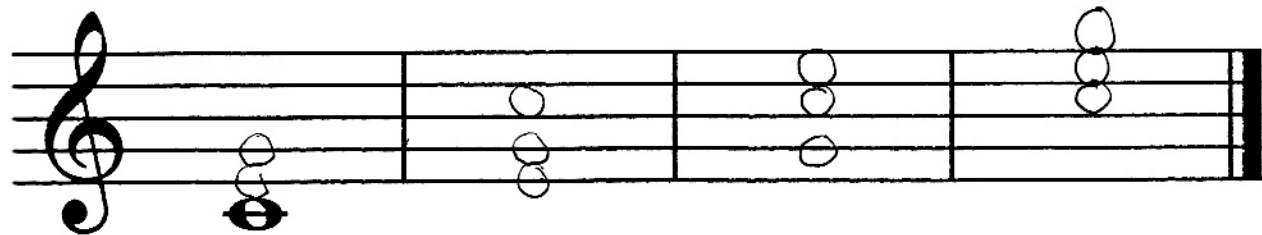
Root position

1st inversion

2nd inversion

Root position

C major



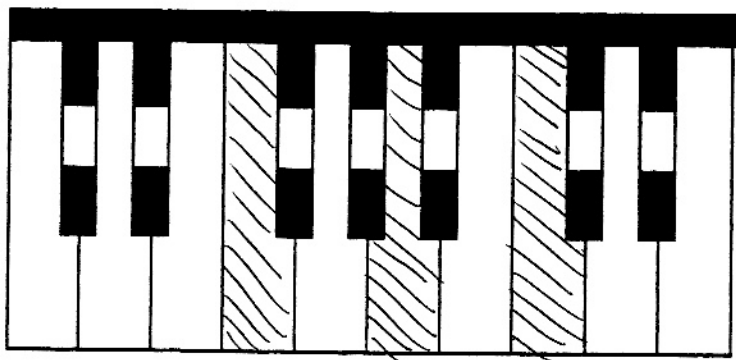
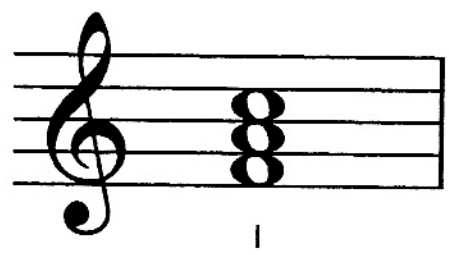
Root position

1st inversion

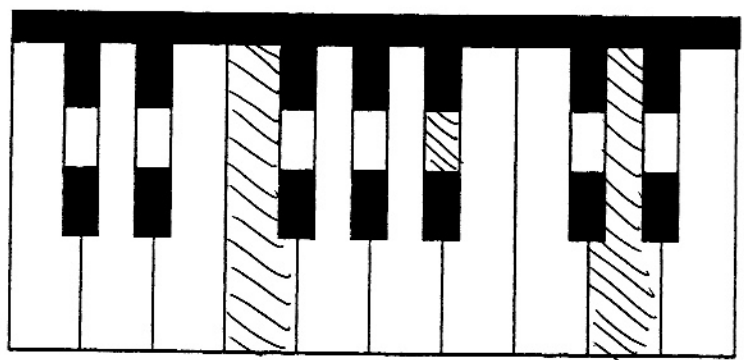
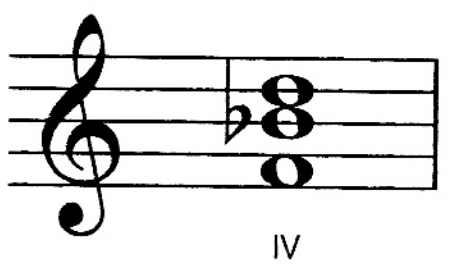
2nd inversion

Root position

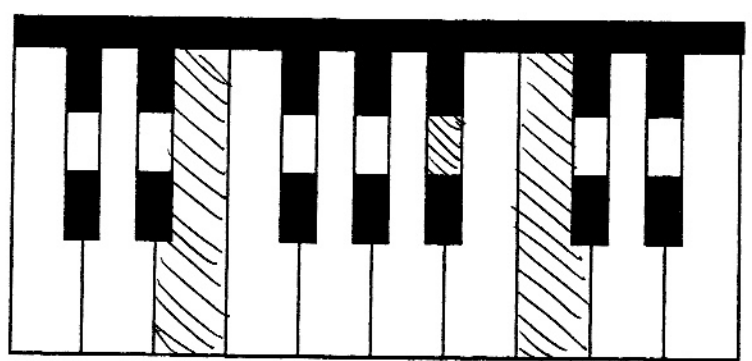
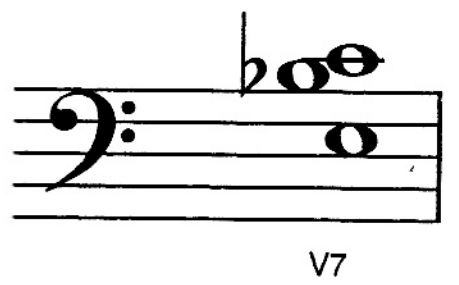
Very Important Numbers (V.I.N.)



Color the notes of the I chord on the keyboard.




Color the notes of the IV chord on the keyboard.



Color the notes of the V7 chord on the keyboard.

Egg Hunt

Color the eggs that fit into the basket marked with a $\frac{6}{8}$ time signature.

Remember - $\frac{6}{8}$ = 
s w w n w w

$\frac{3}{4}$ = 
s w w

