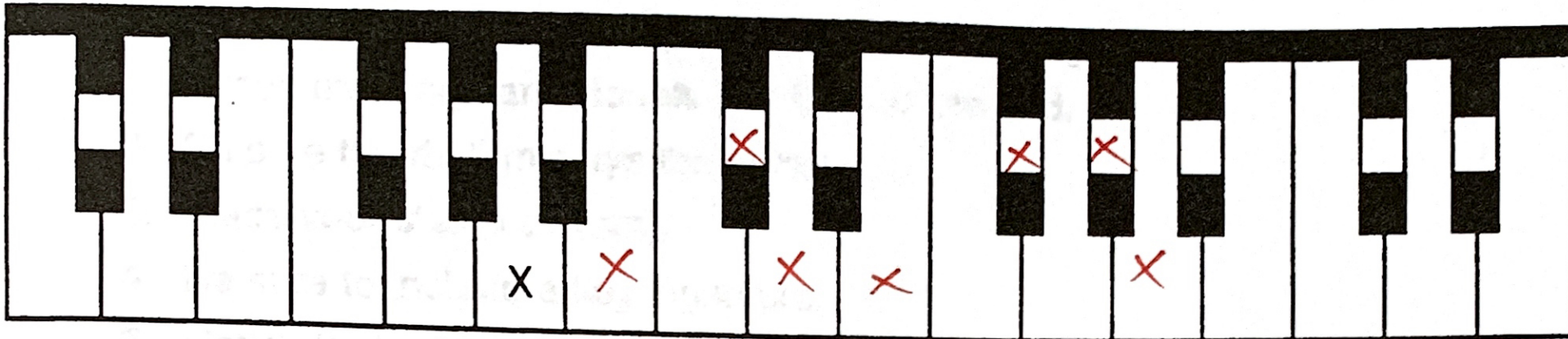




# Do It Again!

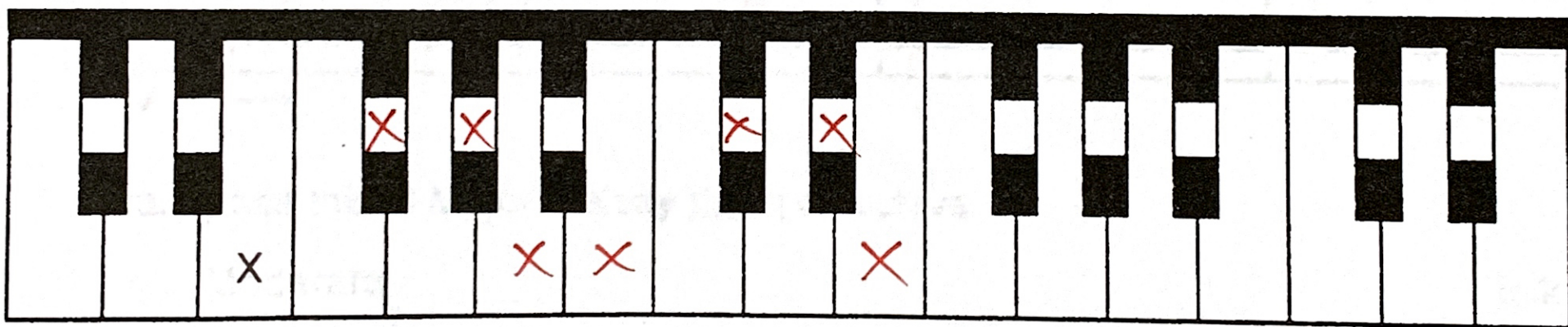
Put an X on each note used in the A major scale.



Write the intervals above each note.

Two musical staves showing intervals for the A major scale. The treble clef staff shows intervals: P1, M2, m2, M3, m3, P4. The bass clef staff shows intervals: P5, M6, m6, M7, m7, m3.

Put an X on each note used in the E major scale.



Write the intervals above each note.

Two musical staves showing intervals for the E major scale. The treble clef staff shows intervals: P1, M2, m2, M3, m3, P4. The bass clef staff shows intervals: P5, M6, m6, M7, m7, P8.

# Transposition Or Transposing



Hints for transposing:

1. Be sure to copy everything, including the time signature, composer's name, tempo markings and double bar lines at the end.
2. Be sure the rhythm stays the same.
3. Place your stems correctly.
4. Be sure to include a key signature.
5. Notice that a line note in the treble clef becomes a space note in the bass clef and vice versa.

Transpose this C Major melody up an octave.

Moderato folk song

Key C+

Moderato folksong

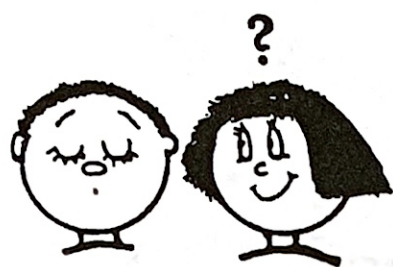
*must paddle/dive correctly!*

Transpose this C Major melody down an octave.

Moderato folk song

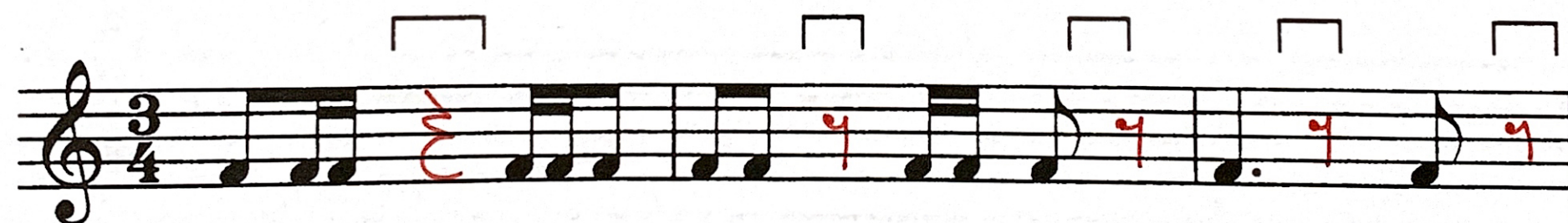
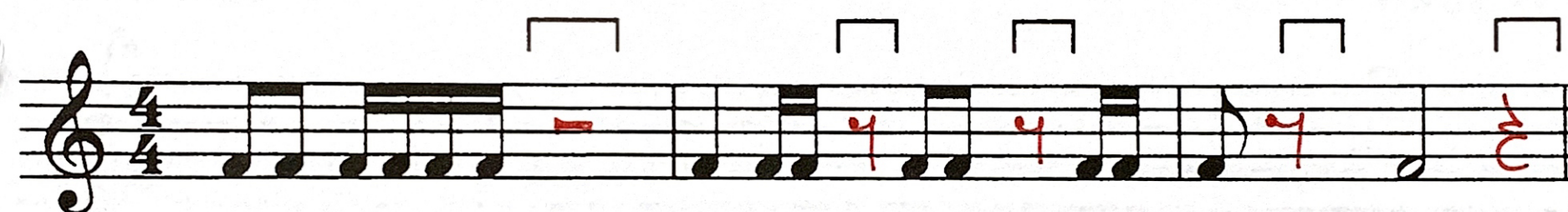
Key C+

Moderato folk song



# Are You Sleeping?

Add ONE REST below each bracket.





# Subdominant Triads

Build a root position triad on the subdominant note of each scale below.  
Show accidentals instead of key signatures.

G major scale

Subdominant triad

e minor harmonic scale

Subdominant triad

F major scale

Subdominant triad

E $\flat$  major scale

Subdominant triad

B $\flat$  major scale

Subdominant triad