



The First Sharp

How do we know "F" is the first sharp?

We can tell two ways:

1. In the scale section of this book you will see that all major scales have the same pattern of steps. If you use this pattern, a G scale has to have an F# to make the steps work out right. So, F# is always the first sharp.
2. Learn the "funny saying" that will teach you the order of the sharps.
(Father Charles Goes Down And Ends Battle)

Print the funny saying for the order of the sharps:

1. Father Charles Goes Down And Ends Battle

How many words are there? 7

How many sharps are there in music? (white ones too) 7

The first sharp is the first letter of the first word in the saying.

So, the first sharp is F.

The second sharp is C.

D major has two sharps. They are F₁ and C₂.

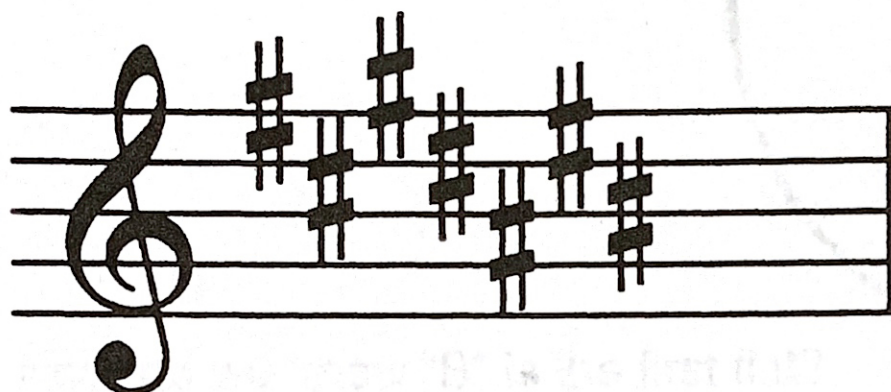
Where Do The Sharps Go?



They have a special order. (Remember the saying?)

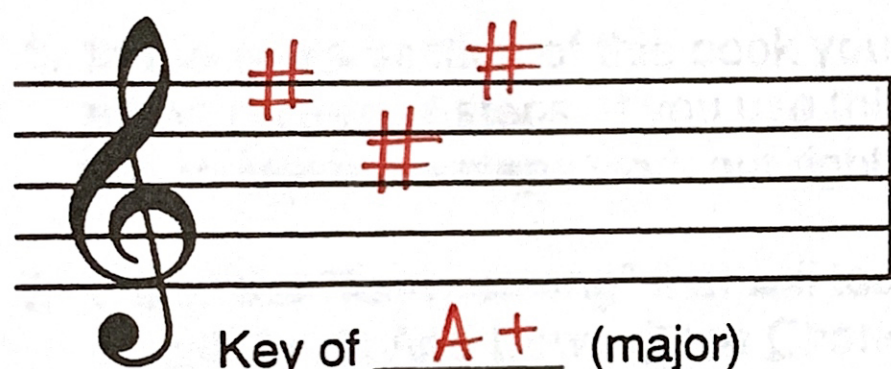
Write it here: Father Charles Goes Down And Ends Battle

They have a special place on the staff too.



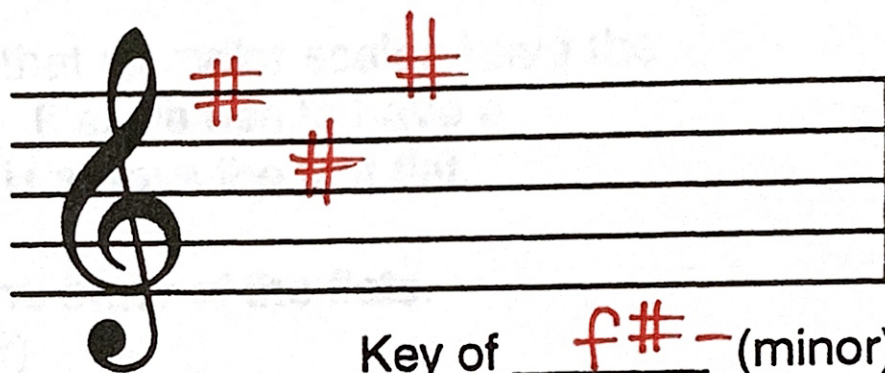
Father Goes
Charles Down Ends
And Battle

Make three sharps in the special order in their special places.



Key of A+ (major)

write them again



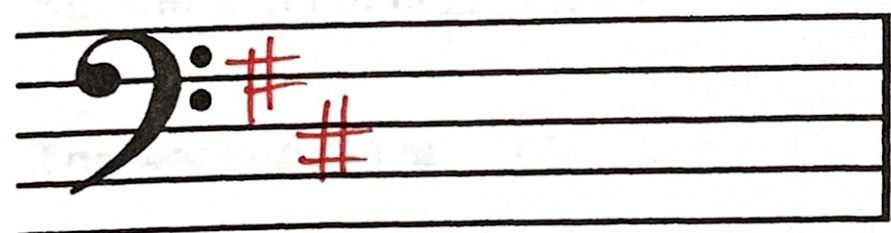
Key of f#- (minor)

The Bass Clef places for Sharps are:



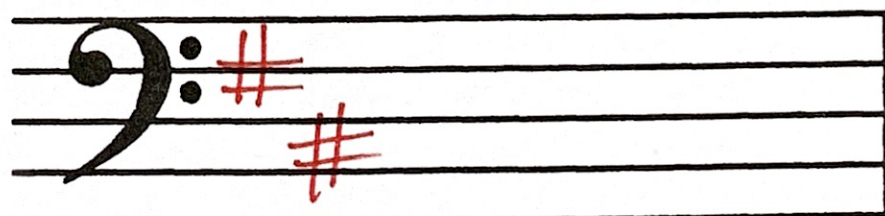
Father Goes
Charles Down Ends
And Battle

Make two sharps in the special order in their special places.



Key of D (major)

write them again

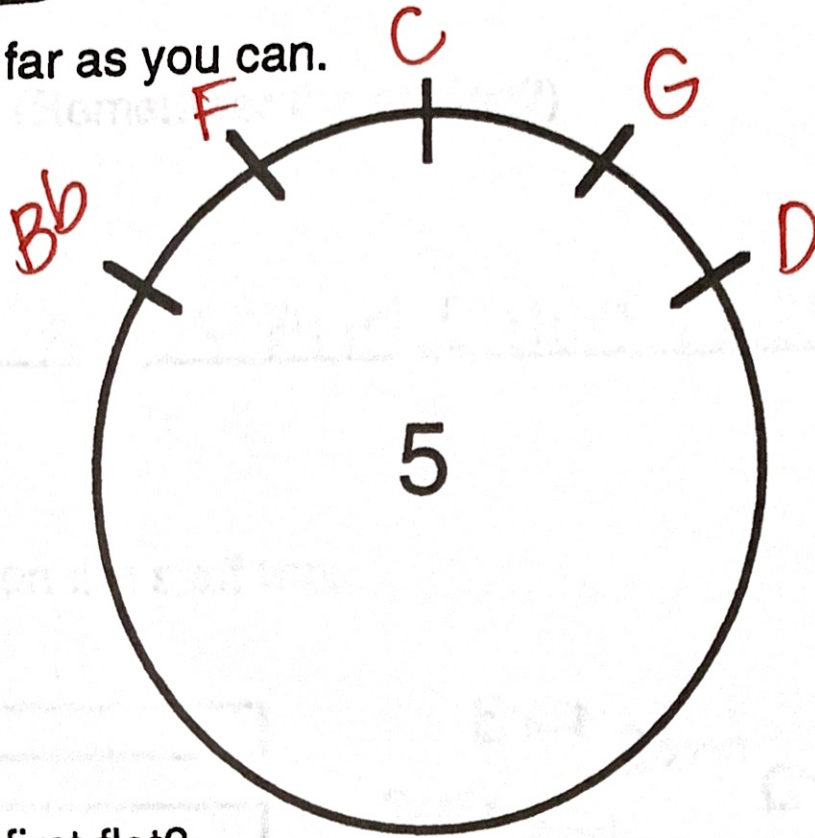


Key of b (minor)



The First Flat

Draw the Circle of Fifths as far as you can.



How do we know "B" is the first flat?

We can tell two ways:

1. In the scale section of this book you will see that all major scales have the same pattern of steps. If you use this pattern, F scale has to have a B \flat to make the steps work out right. So, B \flat is always the first flat.
2. Learn the "funny saying" that will teach you the order of the flats.
(Battle Ends And Down Goes Charles Father)

Print the funny saying for the order of the flats:

1. Battle Ends And Down Goes Charles Father

How many words are there? 7

How many flats are there in music? (white ones too) 7

The first flat is the first letter of the first word in the saying.

So, the first flat is B.

The second flat is E.

B \flat major has two flats. They are B \flat and E \flat .

1 2

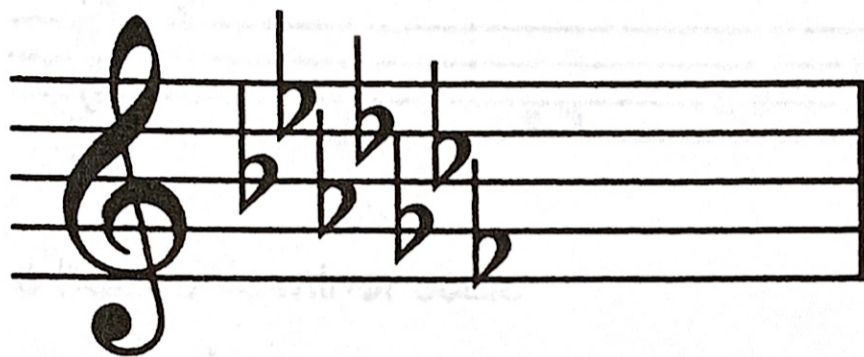


Where Do The Flats Go?

They have a special order. (Remember the saying?)

Write it here: Battle Ends And Down Goes Charles Father

They have a special place on the staff too.



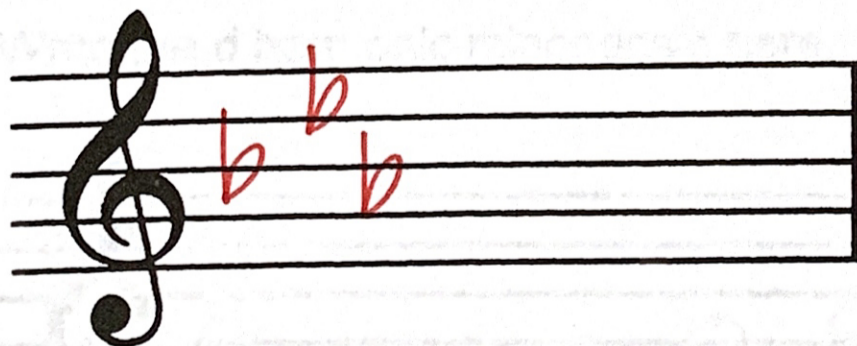
Battle Ends And Down Goes Charles Father

The Bass Clef places for Flats are:



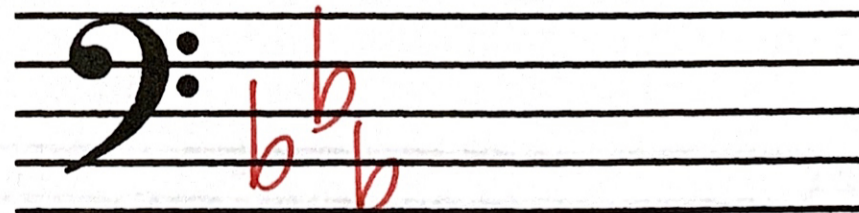
Battle Ends And Down Goes Charles Father

Make three flats in the special order in their special places.



Key of E^b (major)

Make two flats in the special order in their special places.



Key of C (minor)



Minor Scales

2. The harmonic minor scale has the 7th note raised. Sometimes it is raised with a sharp, sometimes it is raised with a natural. We call this the "7 up" scale.

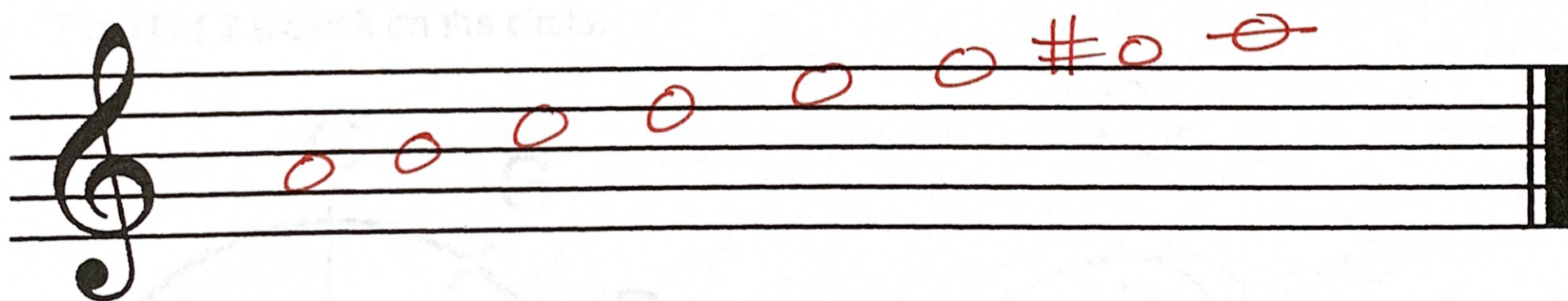
e harmonic minor scale.



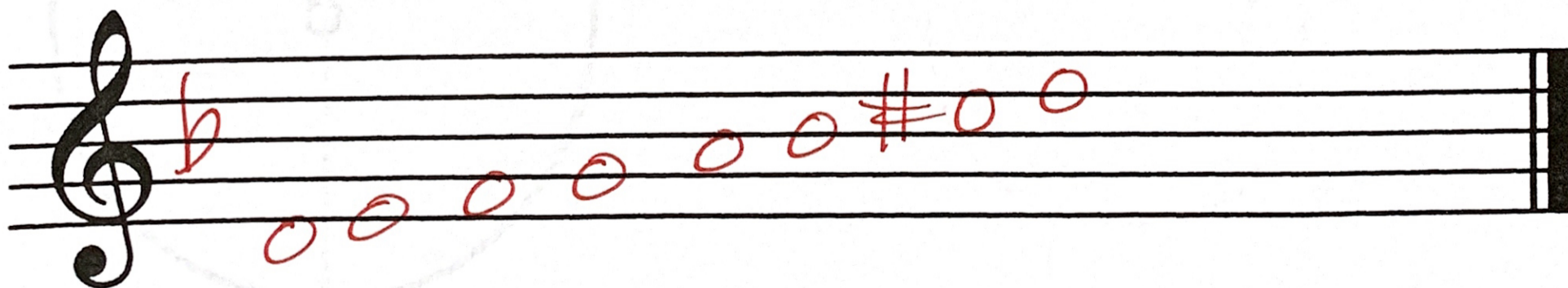
c harmonic minor scale

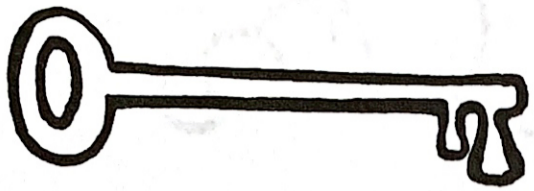


Write the a harmonic minor scale here.



Write the d harmonic minor scale here.





Key Signatures

The sharps and flats at the beginning of a staff tell us the key of the music. They also tell us the notes that will be sharp or flat in the piece.

G major scale has one sharp.

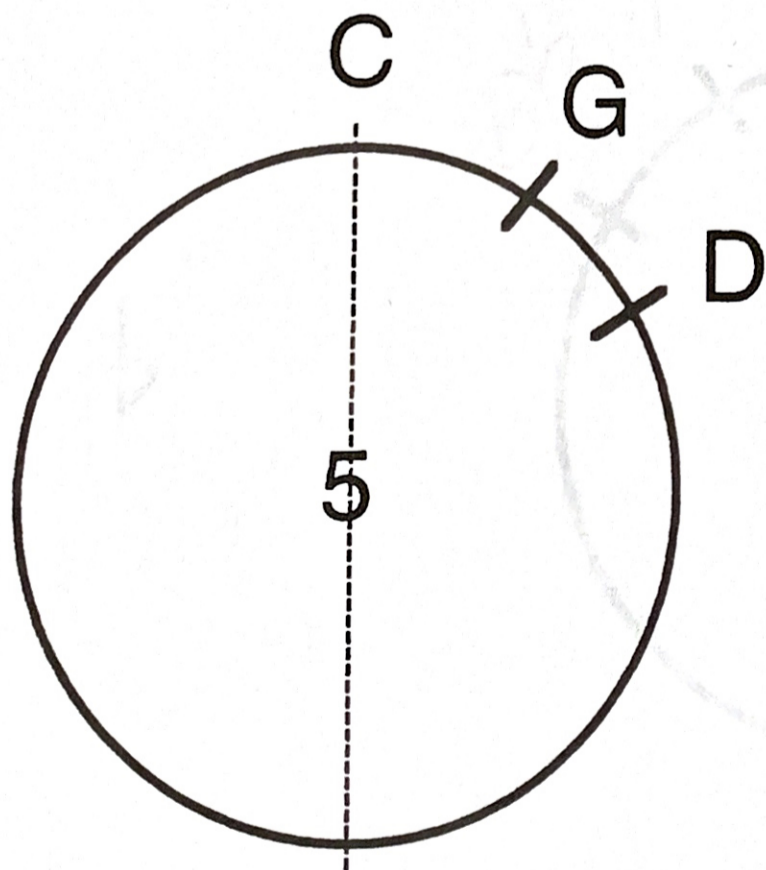
Example #1 - with an accidental

Example #2 - with a key signature

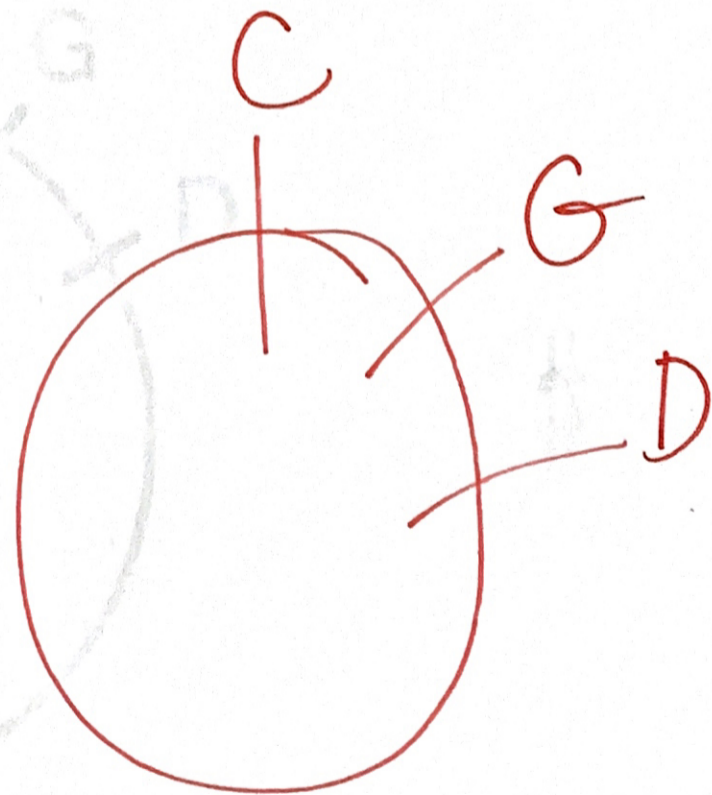


Introducing the Circle of Fifths.

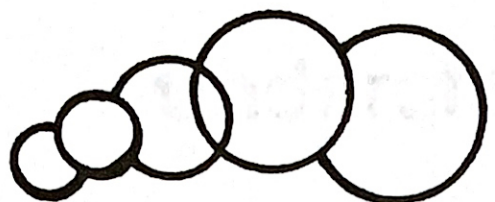
1. Remember that C has no sharps or flats.
2. Draw a circle and put 5 in the middle of it.
3. Put C at the top of the circle (at 12 o'clock).
4. Count 5 (including C) letter names forward. Did you get G?
Put G at 1 o'clock on the circle.
5. Count 5 more letter names (including G). Did you get D?
Put D at 2 o'clock on the circle.



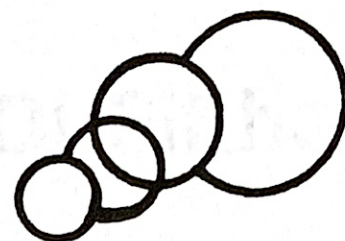
Circle of Fifths.



Draw your own here.



Circle Of Fifths



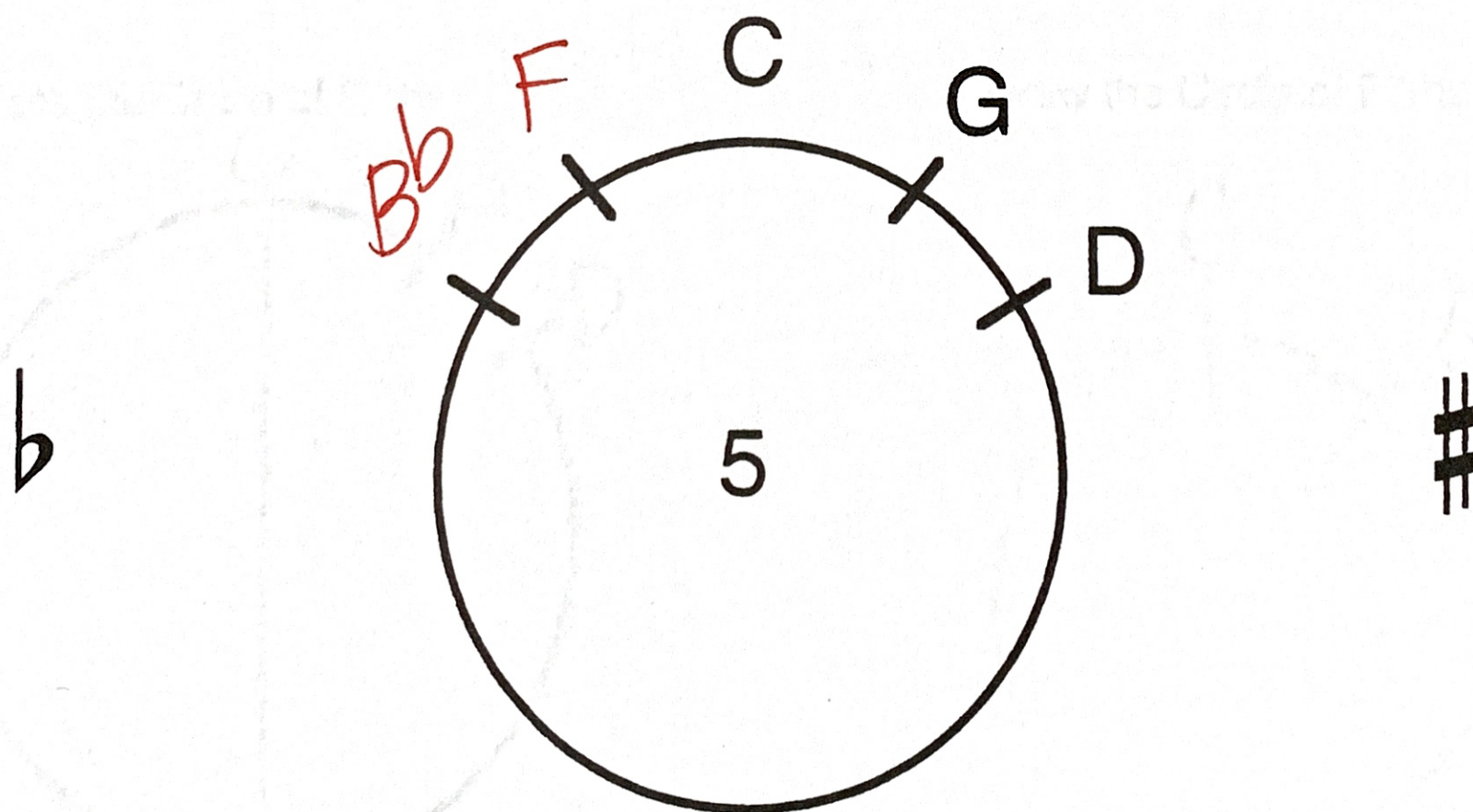
This circle makes it very easy for you to know the key signatures of your music.

The right side of the circle has keys with sharps.

The left side of the circle has keys with flats.

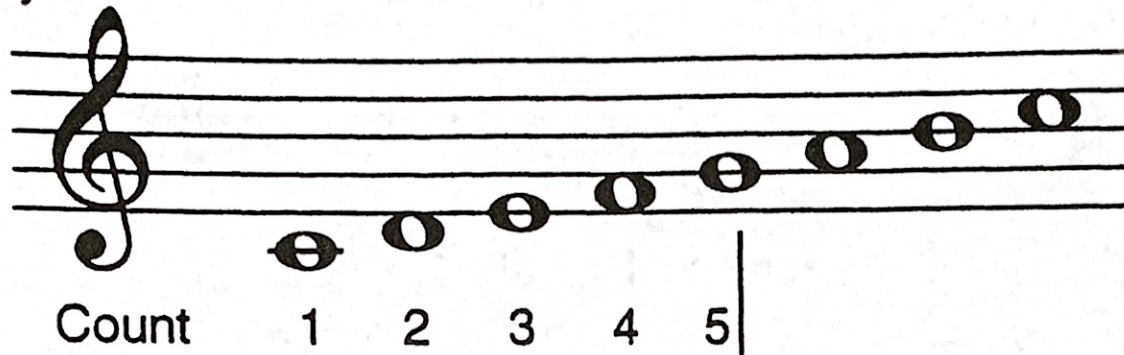
Add these steps to the Circle of Fifths.

1. Count 5 (including C letter names backward).
Did you get F? Put your answer at 11 o'clock on the circle.
2. Do you remember the key signature of F? Yes - it has one flat - B flat.
Put a flat to the left of the circle.
3. Count 5 (including F) letter names backward from F.
Did you get B? Remember the left side has flats, (B flat is the first flat) so put B \flat at 10 o'clock on the circle.

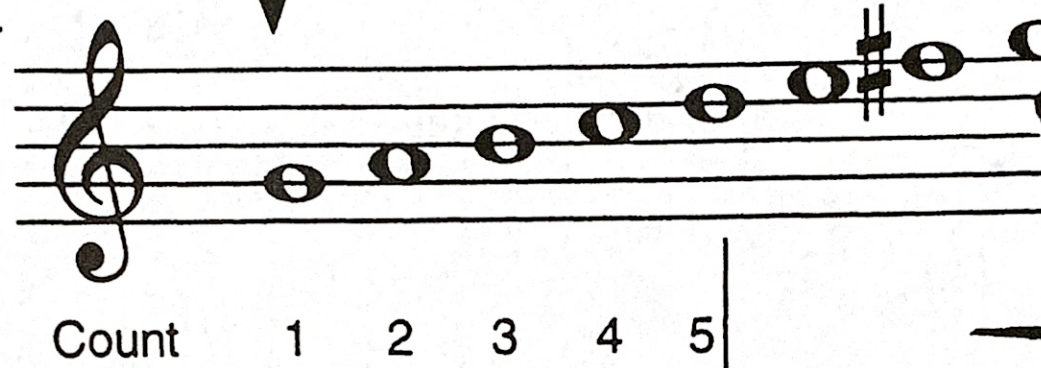


Understanding The Circle Of Fifths

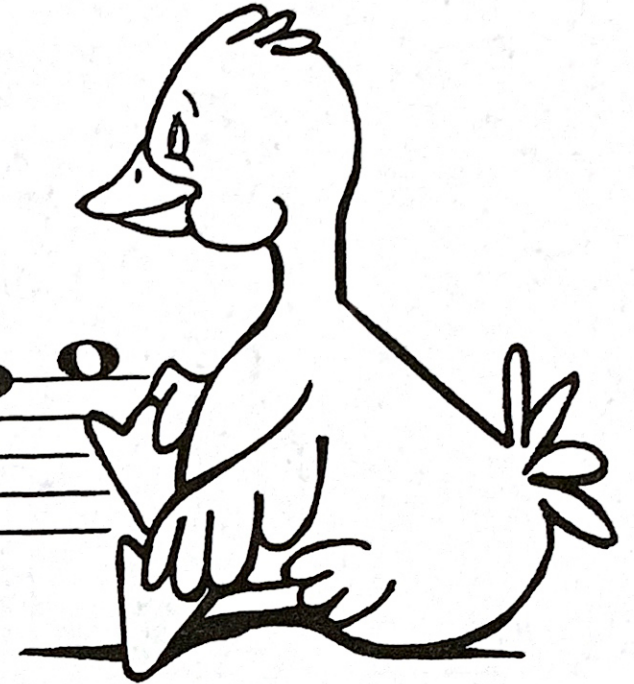
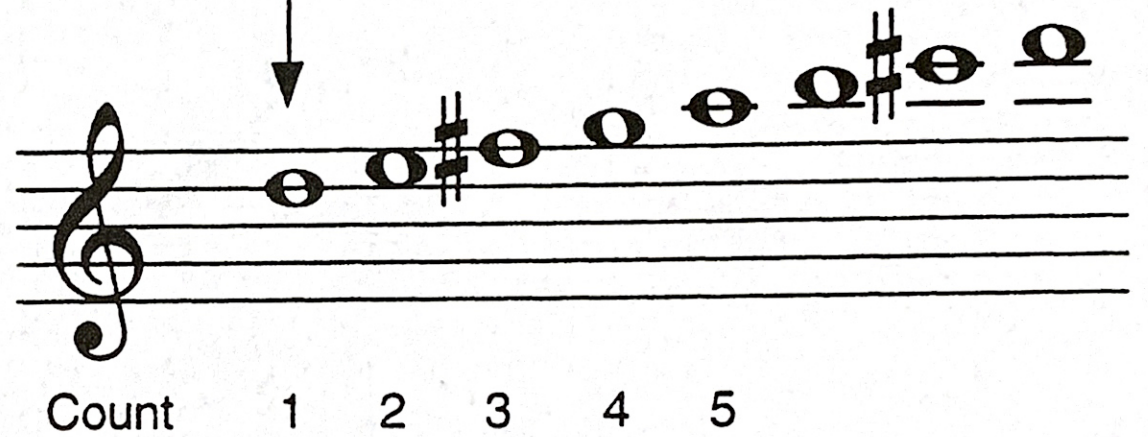
C major



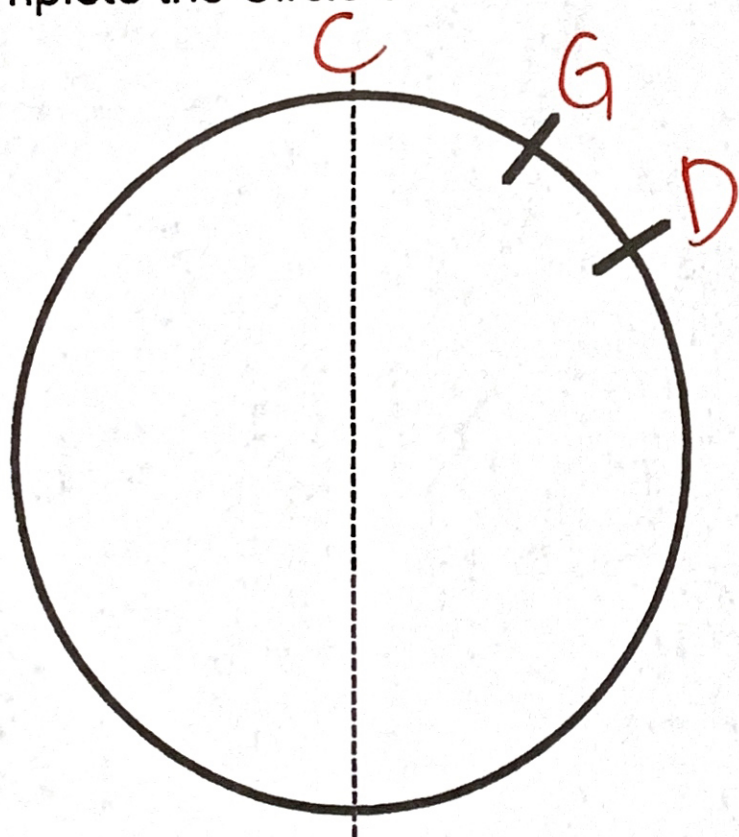
G major



D major



Complete the Circle of Fifths



Draw the Circle of Fifths

