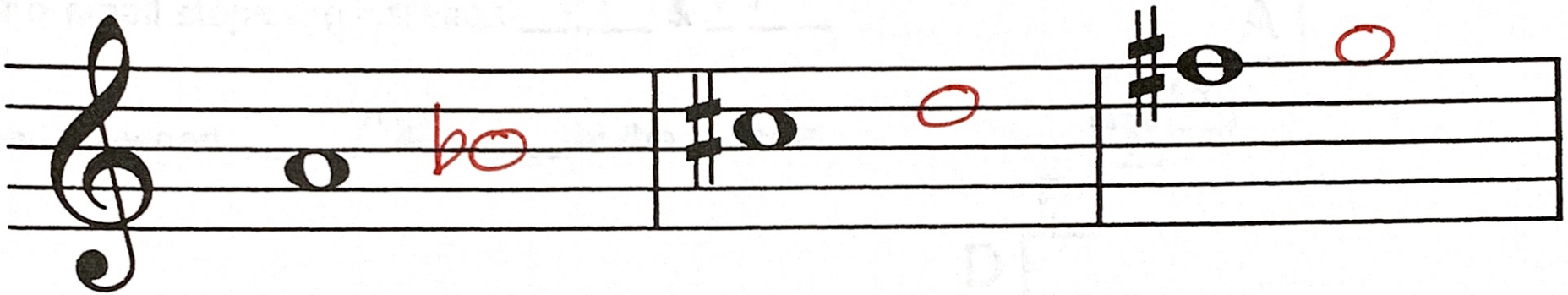


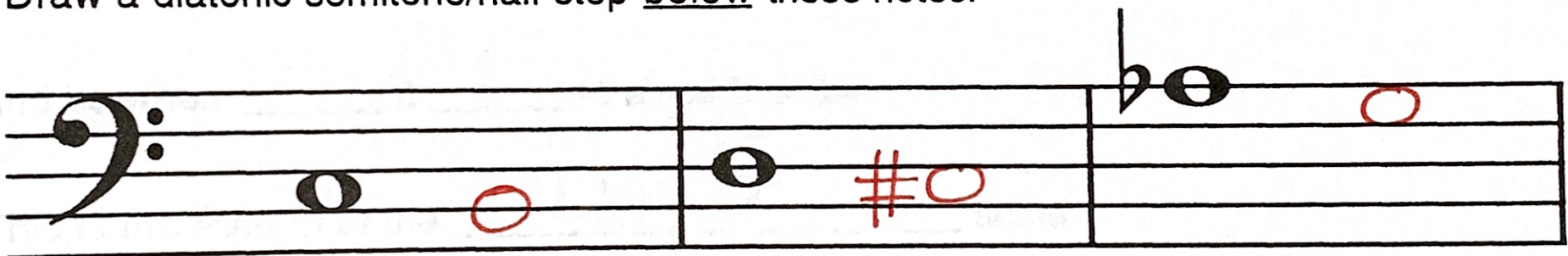
# Diatonic

Diatonic semitones/half steps have Different letter names. Remember D and D?

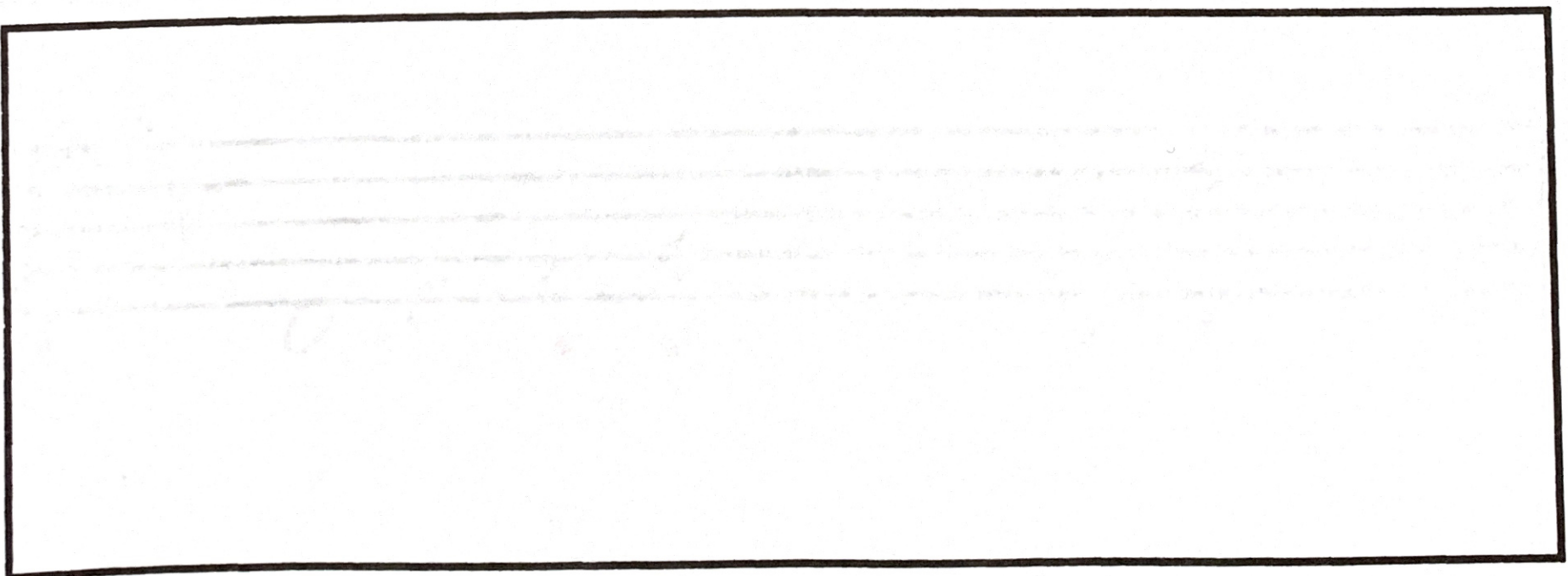
Draw a diatonic semitone/half step above the following notes.



Draw a diatonic semitone/half step below these notes.



Always use your lollipop keyboard. Draw it here.

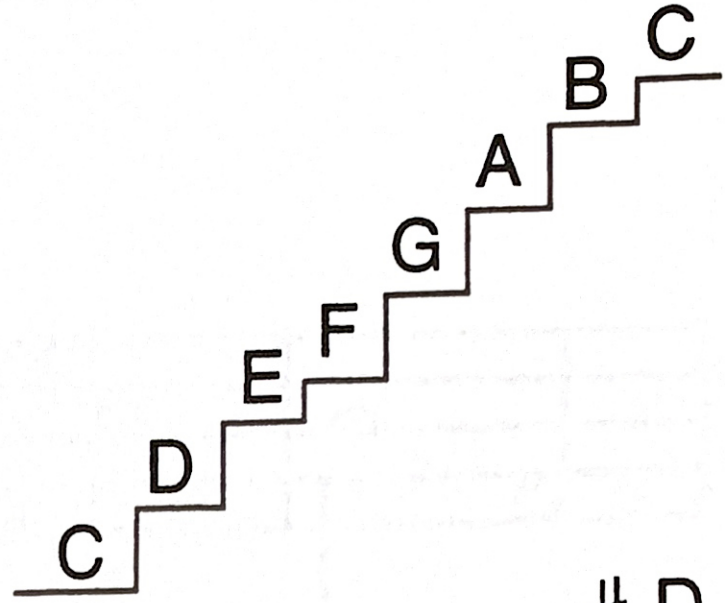




## Steps!

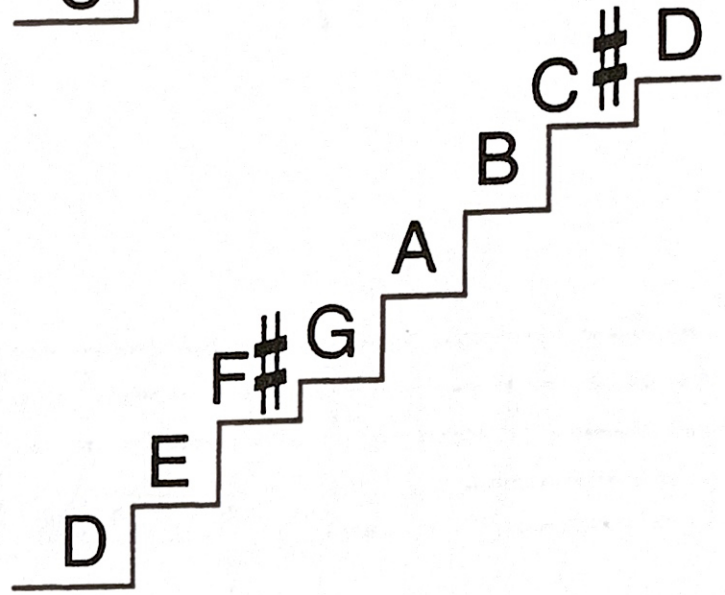
The small steps are between E & F

and between B & C in the C scale.



The small steps are between F# & G

and between C# & D in the D scale.

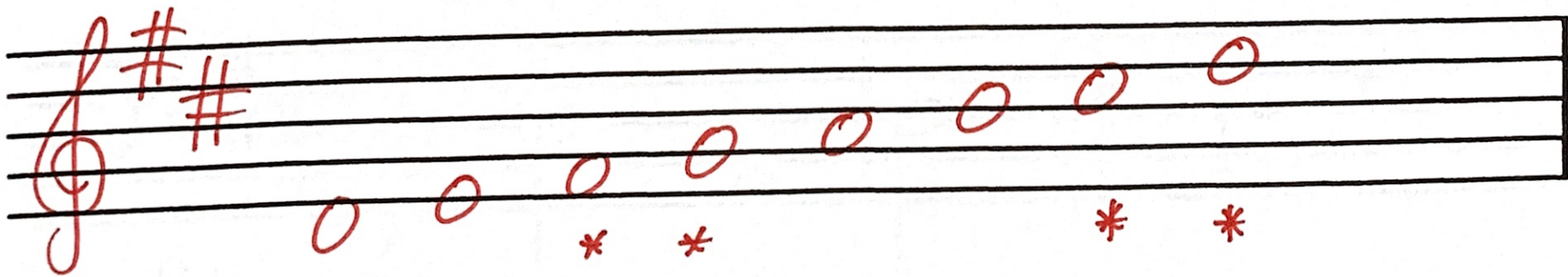


The small steps are always between numbers 3 & 4

and between 7 & 8 in a major scale.

This is the Pattern of the Major scale.

Write the D Major Scale ascending here and color F# and G blue and C# and D blue. Remember to draw a clef.





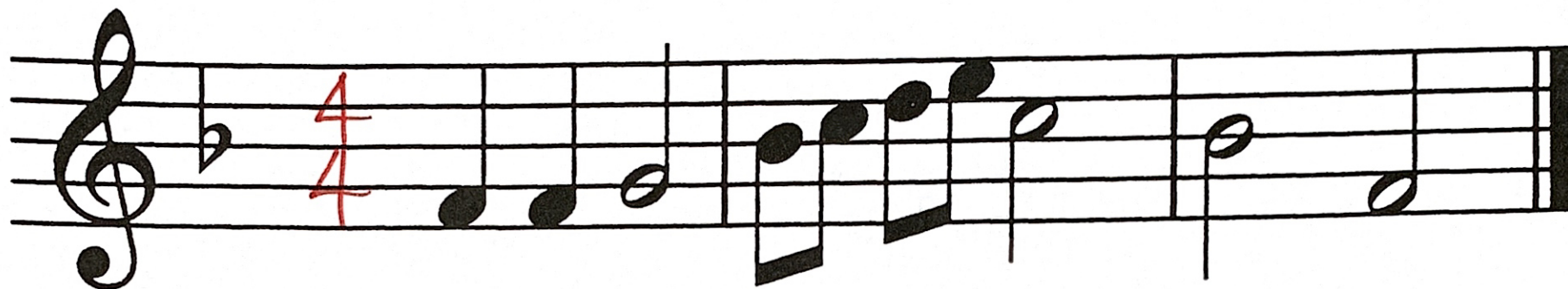


## Time Signatures

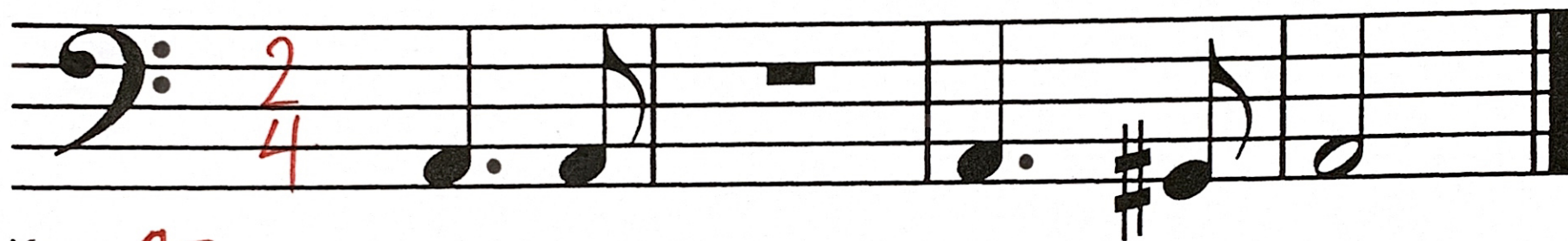
Add the time signatures.

Bonus! Add the counts below.

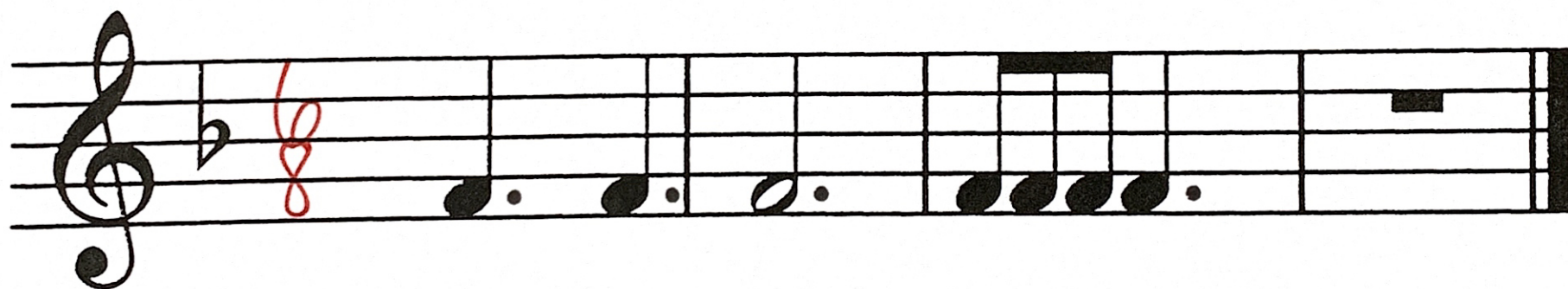
Name the keys. Play one line per day.



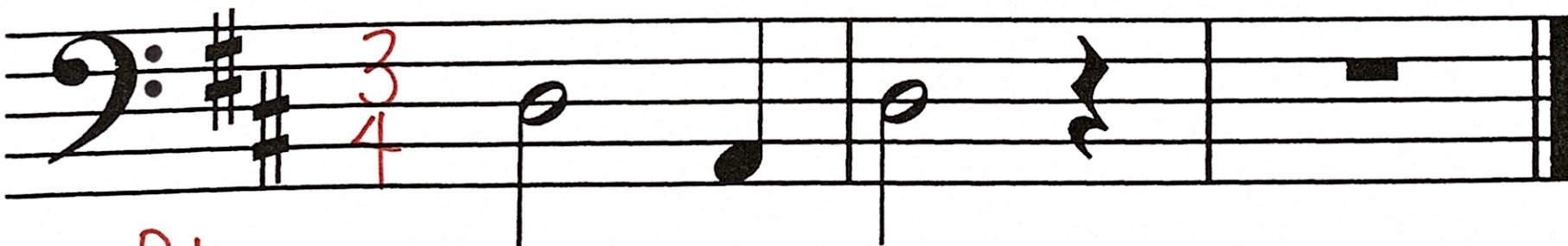
Key: F+



Key: A-



Key: F+



Key: D+