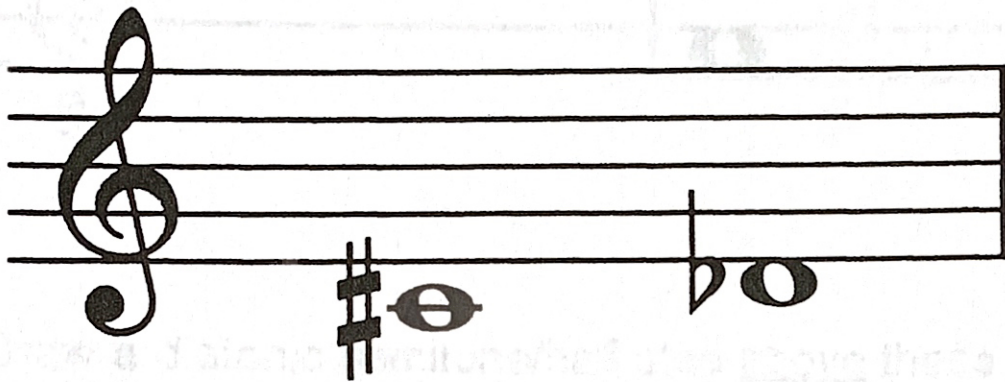


## Diatonic And Chromatic

Some keys on the piano have two names.  
For example, C $\sharp$  and D $\flat$ , or B $\sharp$  and C.

Now when you write these in music you can also write them two ways!  
Look at C $\sharp$  and D $\flat$ .



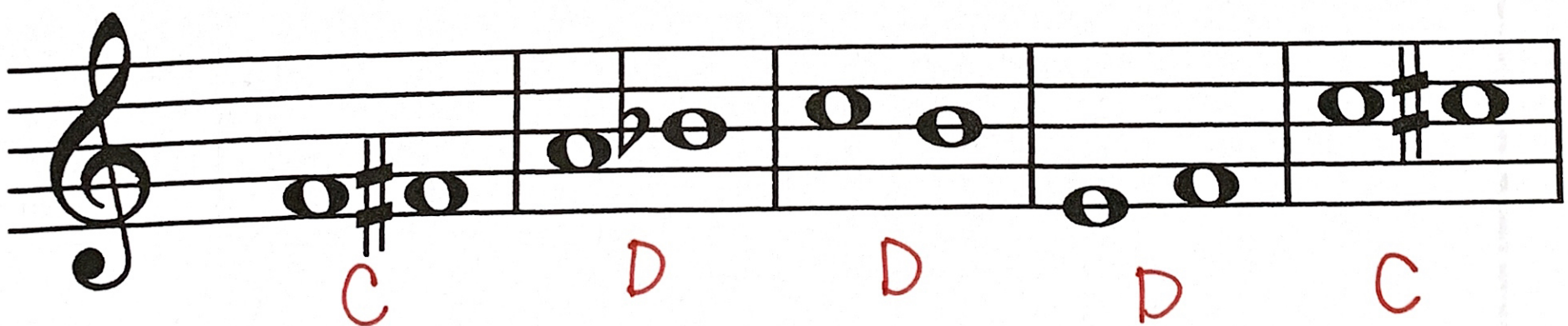
Now when you have semitones/half steps you can also write them two different ways - C to C $\sharp$  or C to D $\flat$ .



If the semitone/half step has the Common name we call it Chromatic.

If the semitone/half step has a Different name we call it Diatonic.

Mark the following semitones/half steps "D" for Diatonic or "C" for Chromatic.



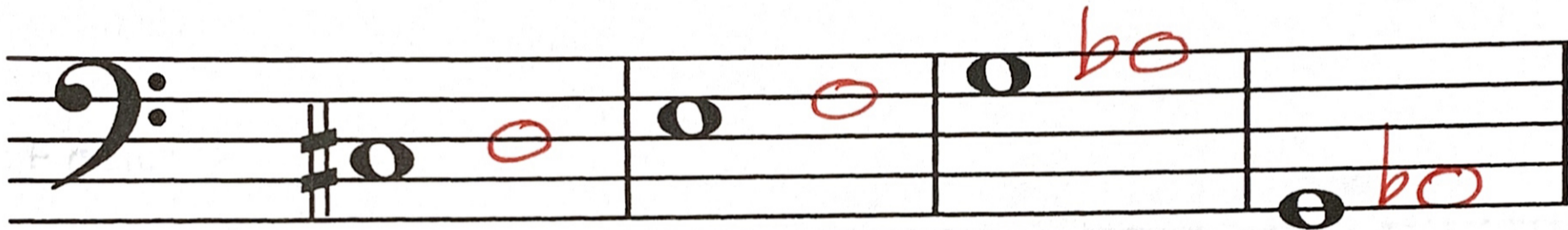
# Chromatic And Diatonic Semitones/Half Steps

Remember: Diatonic means Different, Chromatic means Common.

Draw a chromatic semitone/half step above these notes.



Draw a diatonic semitone/half step above these notes.

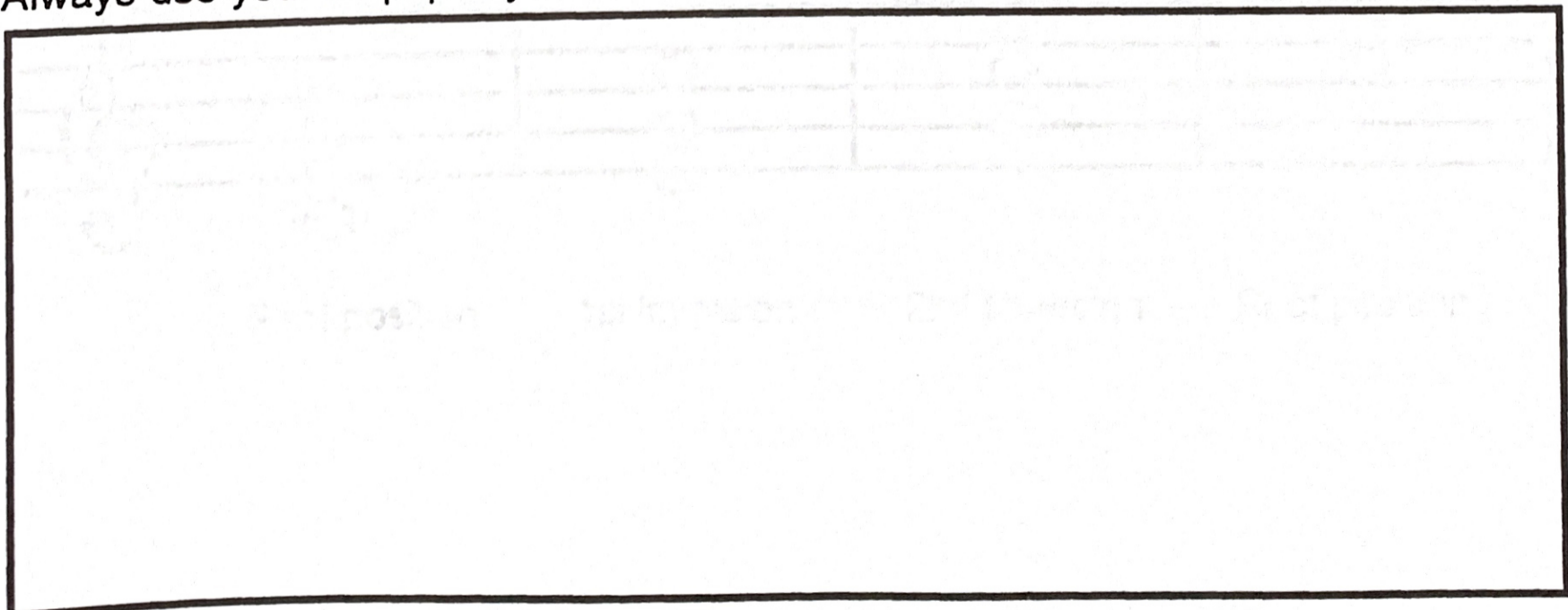


Draw a diatonic semitone/half step below these notes.

Draw a chromatic semitone/half step below these notes.



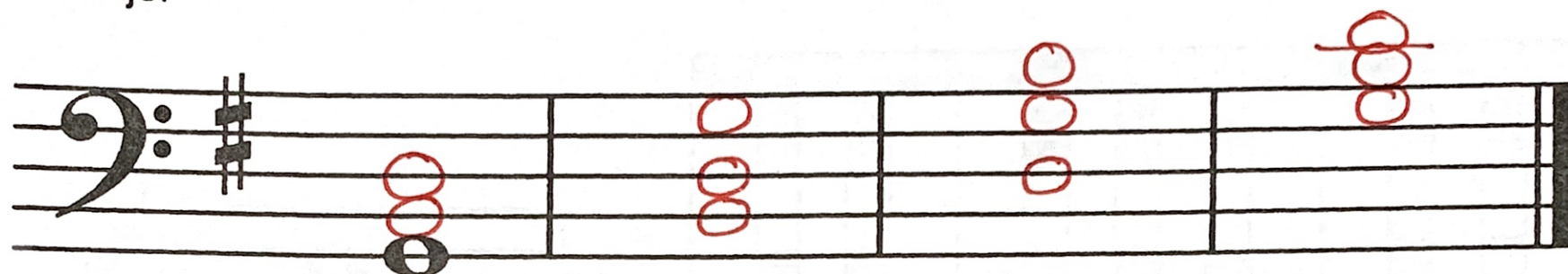
Always use your lollipop keyboard. Draw it here.



# Triad Inversions

Draw the solid triads on the staff.

G major



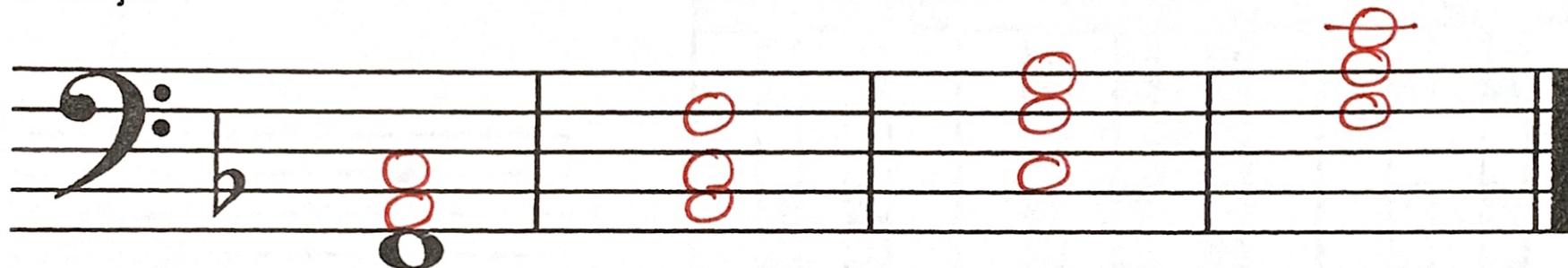
Root position

1st inversion

2nd inversion

Root position

F major



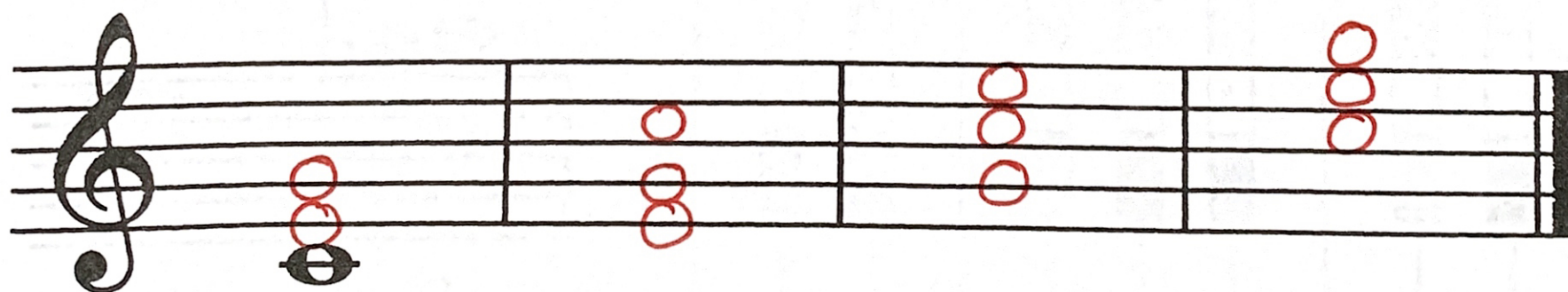
Root position

1st inversion

2nd inversion

Root position

C major



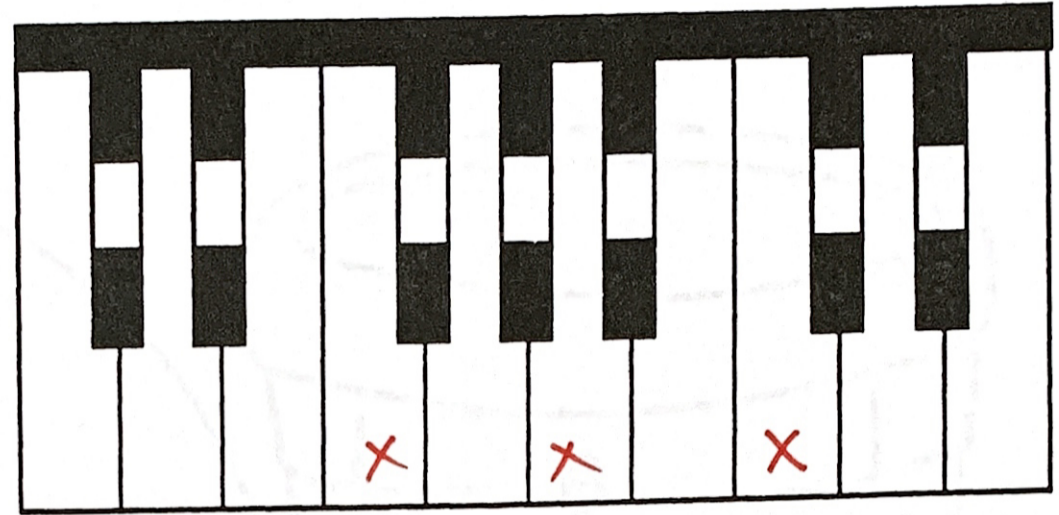
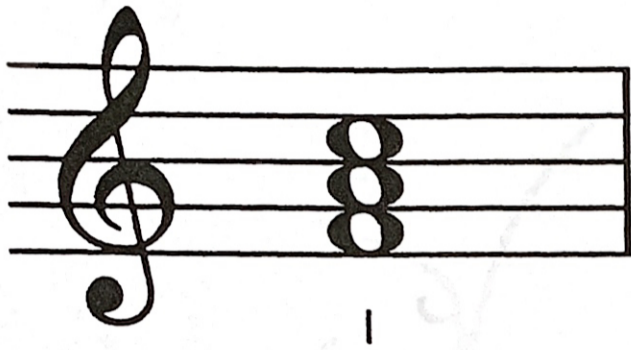
Root position

1st inversion

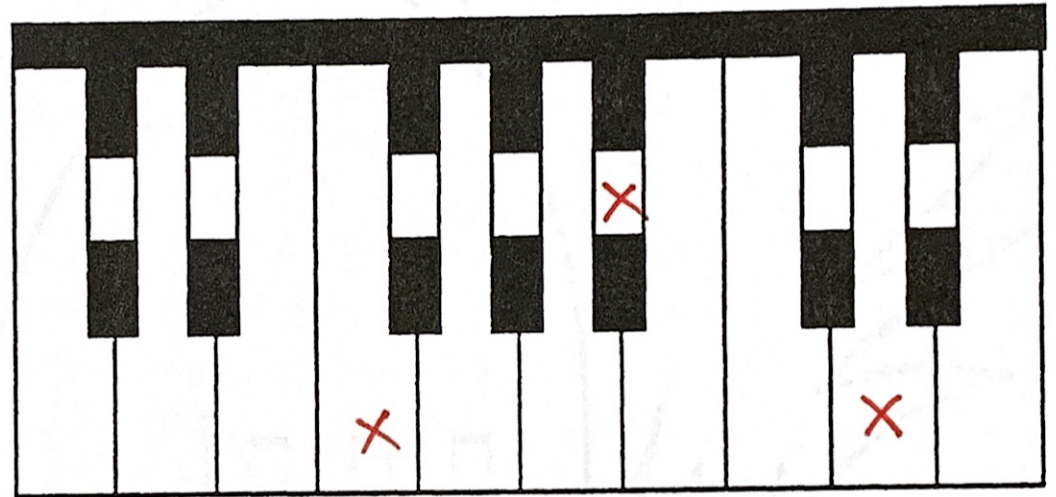
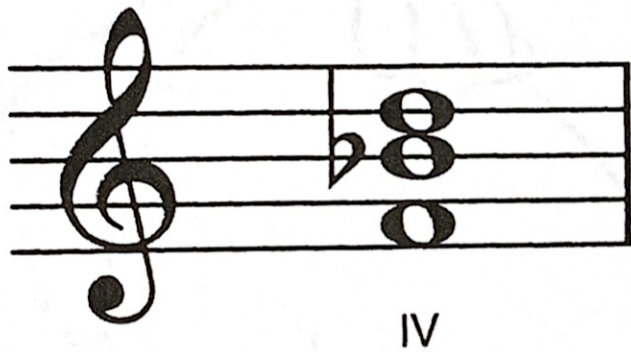
2nd inversion

Root position

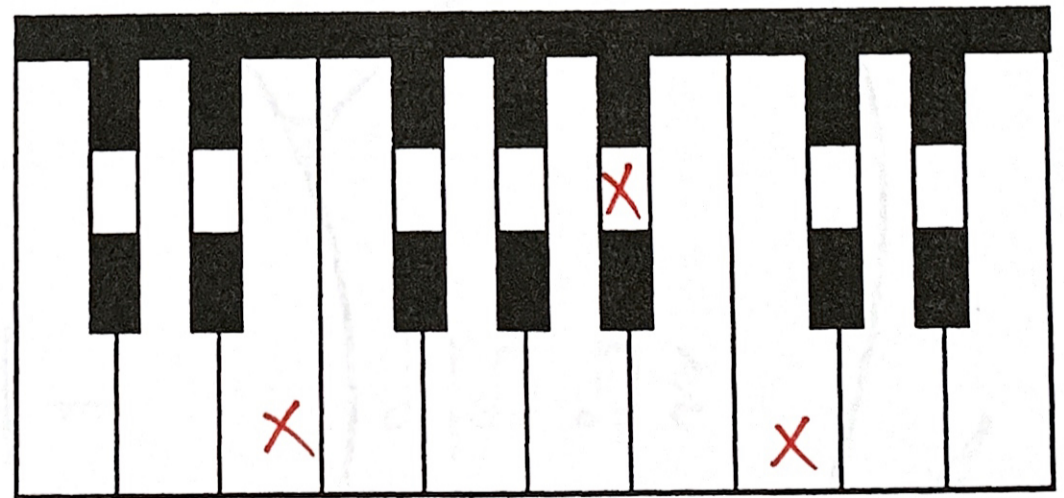
# Very Important Numbers (V.I.N.)



Color the notes of the I chord on the keyboard.



Color the notes of the IV chord on the keyboard.



Color the notes of the V7 chord on the keyboard.